

常磐炭田双葉地区北部地形地質図
THE TOPOGRAPHICAL AND GEOLOGICAL MAP
OF THE NORTHERN PART OF FUTABA
DISTRICT JŌBAN COAL FIELD



- 凡例
Legend
- 冲積層
Alluvium
 - 段丘堆積層
Terrace Deposit
 - 土田砂層
Tatsuta Formation
 - 双葉富岡層
Futaba Tomoka Formation
 - 龜尾谷層
Kameso Formation
 - 水野谷砂層
Mizunoya Formation
 - 五反砂層
Goyasu Sandstone
 - 五反礫層
Goyasu Conglomerate
 - 五反層
Goyasu Formation
 - 白土層
Shiramine Group
 - 上層
Upper bed (Slate)
 - 下層
Lower bed (Sandstone)
 - 石炭層
Iwaki Coal-bearing Formation
 - 綠泥質岩
Green metamorphic rock
 - 花崗閃綠岩
Granodiorite
 - 石灰岩
Limestone
 - 上層
Upper bed
 - 下層
Lower bed
 - 逆断層
Reverse Fault
 - 正断層
Normal Fault
 - 地質断面線
Section Line
 - 化石採集地
Fossil Locality
 - 坑口
Gallery Opening
 - 背斜軸
Anticlinal Axis
 - 向斜軸
Synclinal Axis

Scale 1 : 15,000

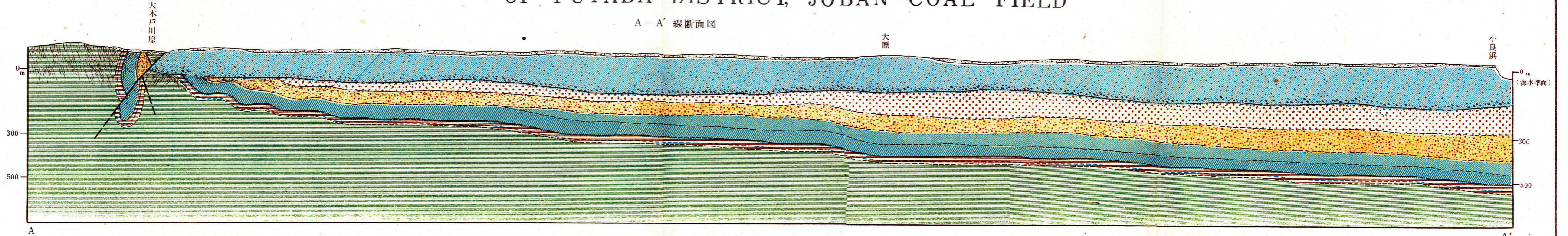


Contours 2 meters Vertical Interval

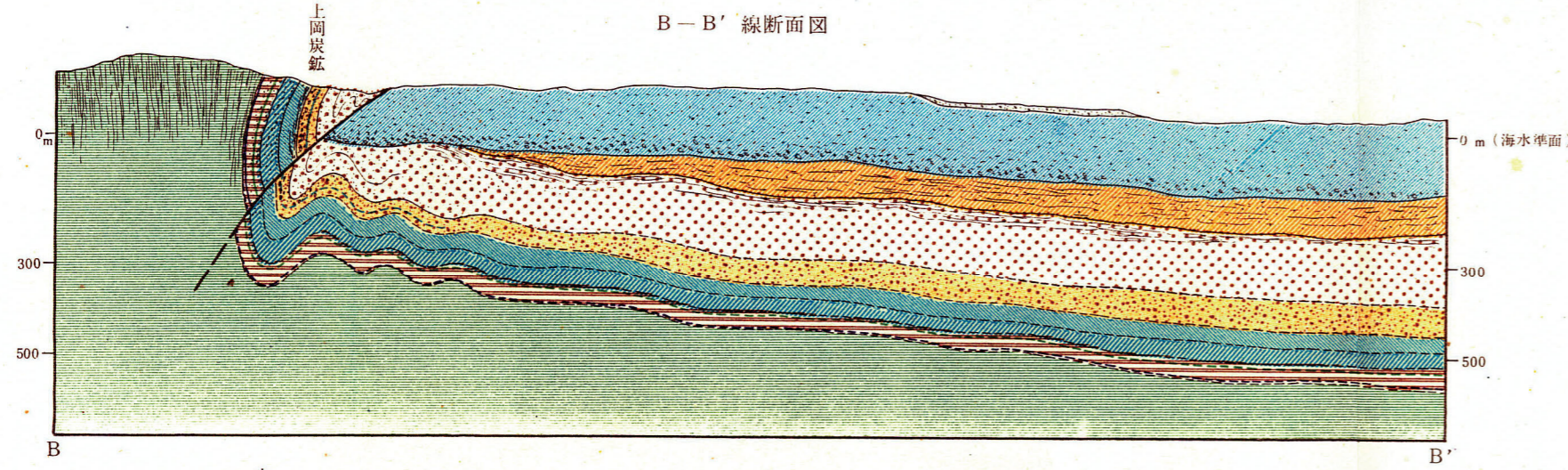
地質調査所
東京
小淵沢
地質調査所
印刷

常磐炭田双葉地区北部地質断面図 TECTONIC SECTIONS OF THE NORTHERN PART OF FUTABA DISTRICT, JŌBAN COAL FIELD

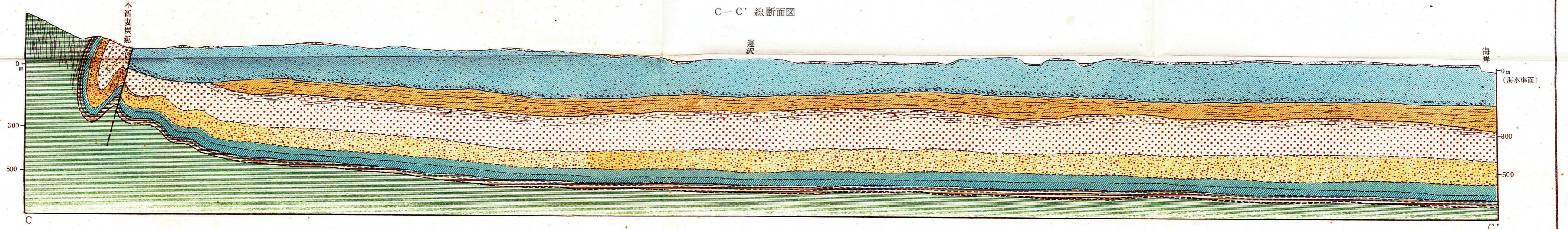
A-A' 線断面図



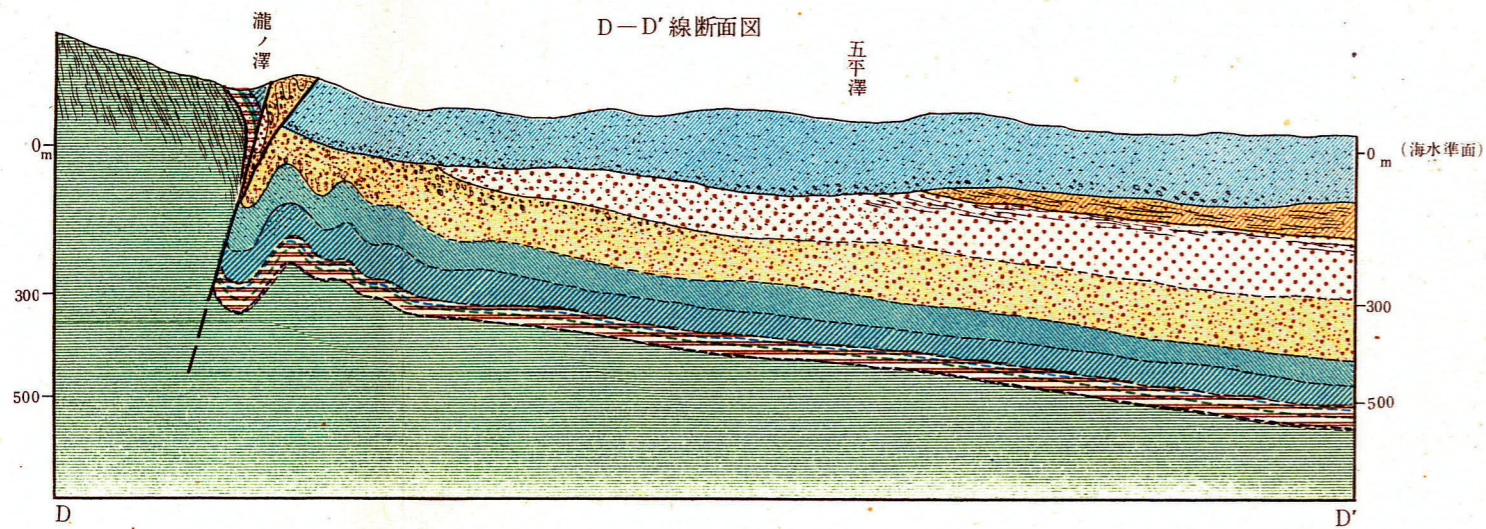
B-B' 線断面図



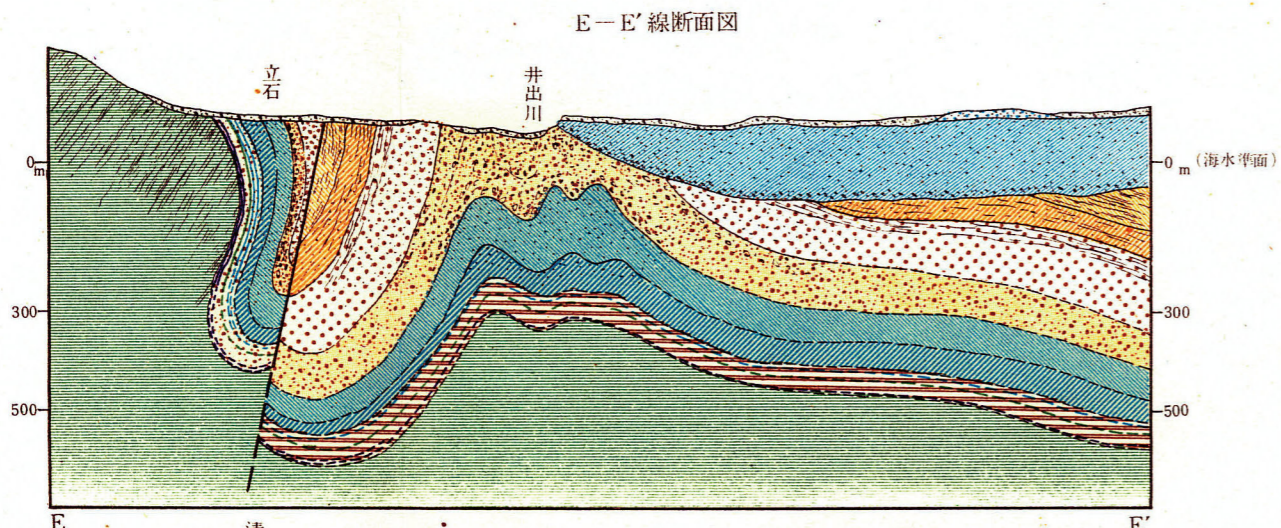
C-C' 線断面図



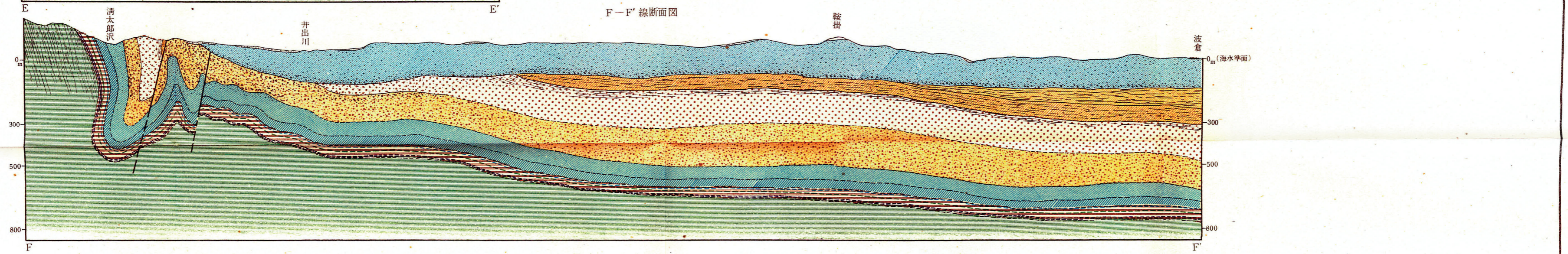
D-D' 線断面図



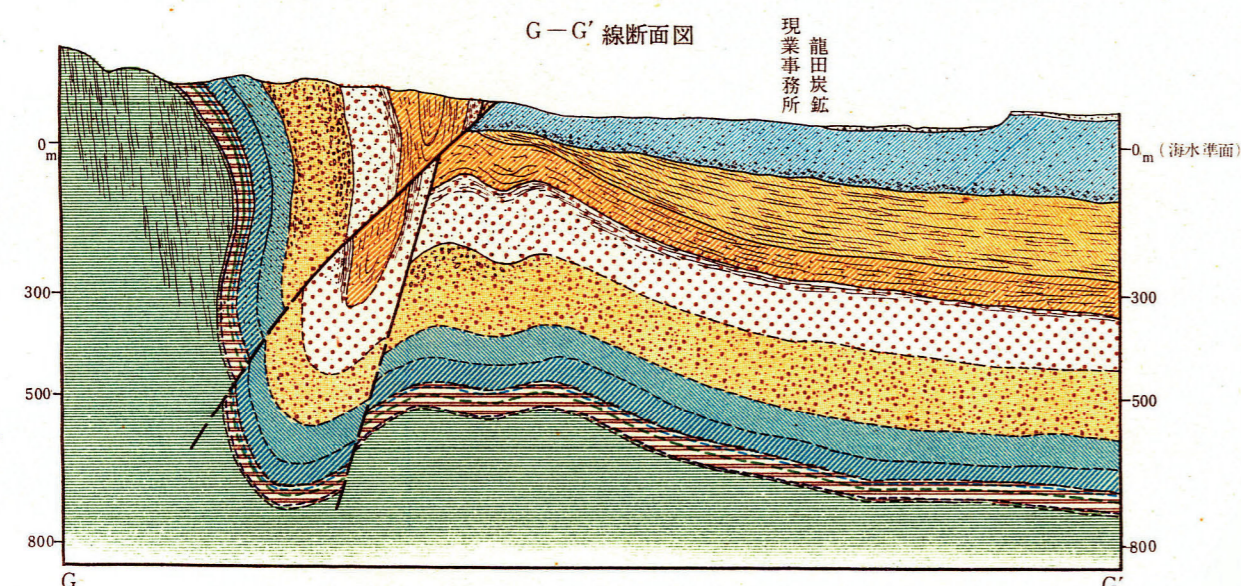
E-E' 線断面図



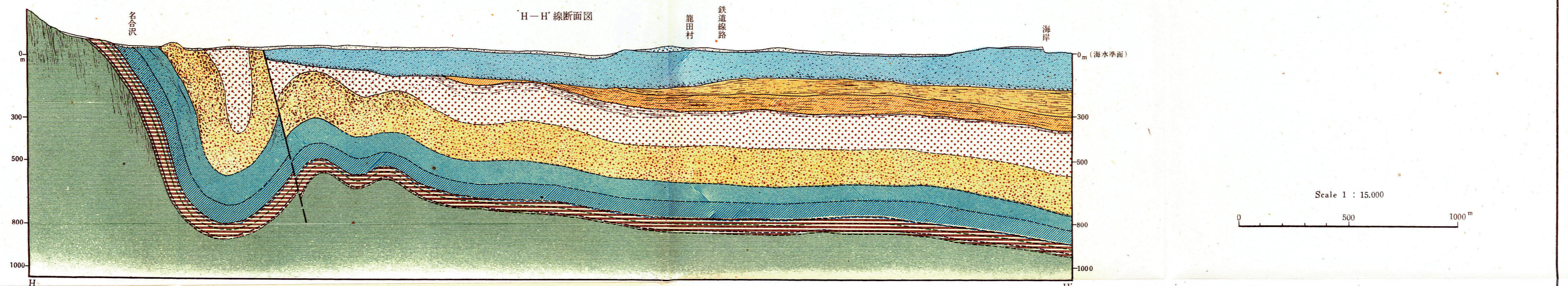
F-F' 線断面図



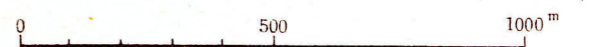
G-G' 線断面図



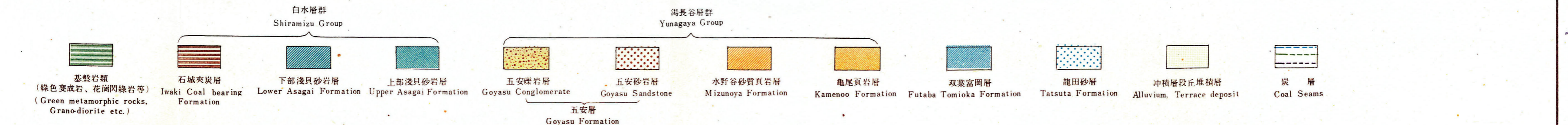
H-H' 線断面図



Scale 1 : 15,000

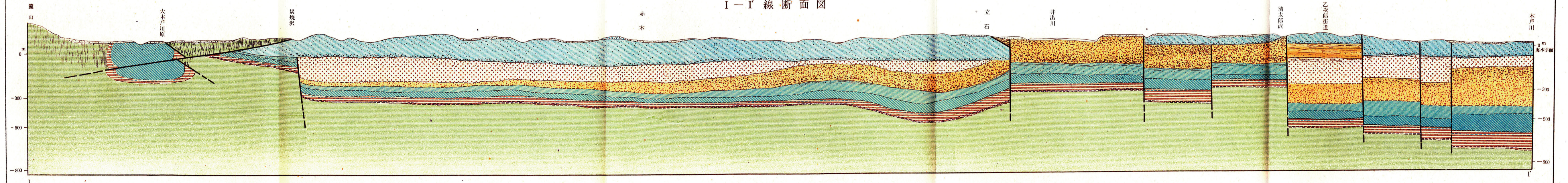


地質調査 三田正 技官 青柳龍光

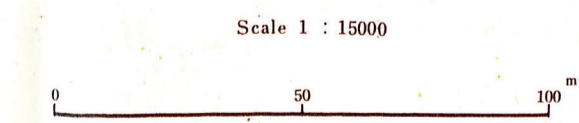
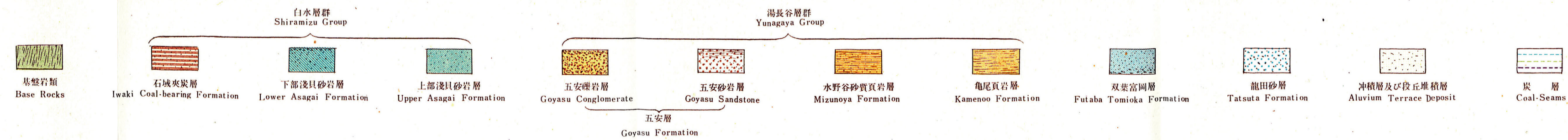
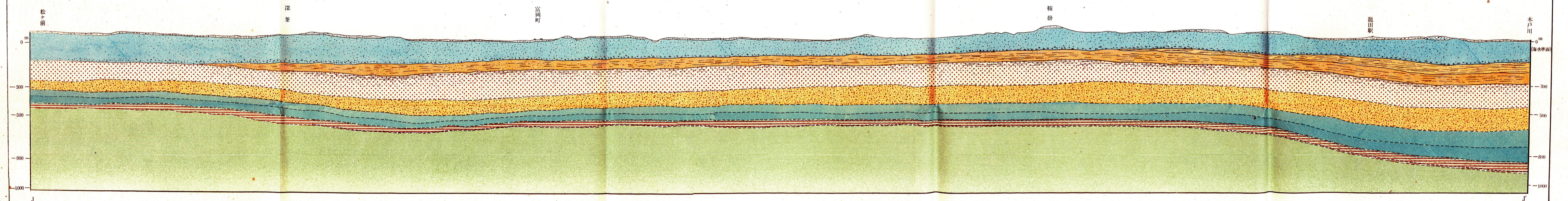


常磐炭田双葉地区北部地質断面図 TECTONIC SECTIONS OF THE NORTHERN PART OF FUTABA DISTRICT

I-I' 線断面図



J-J' 線断面図



地質調査 技官 三田正 技官 小島光夫 技官 青柳信雄 地形調査 技官 中塚榮治