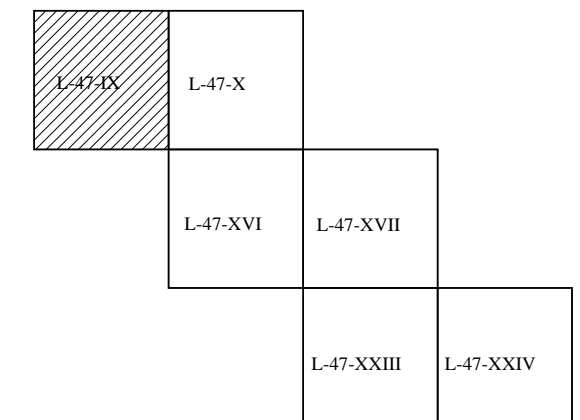
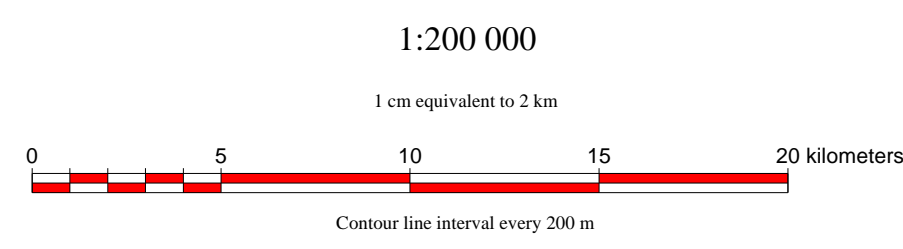
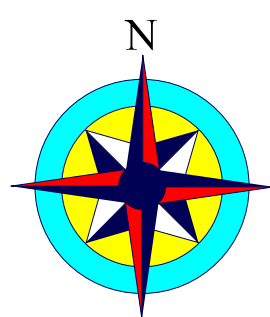
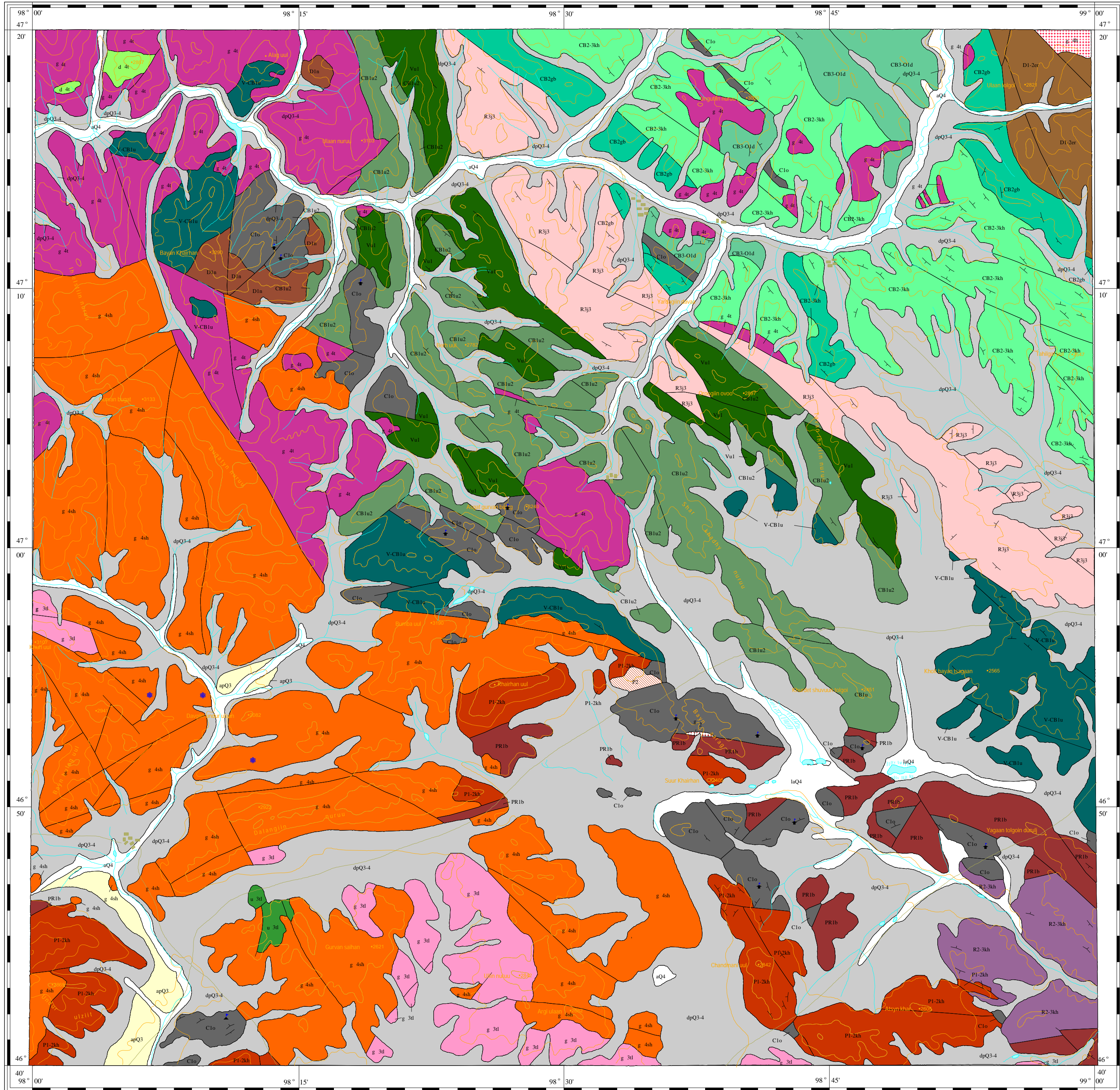


GEOLOGICAL MAP

L-47-IX

MONGOLIA
Mineral Resources Authority of Mongolia
Office of Geology
Bureau of Geological Investigation C 1998

JAPAN
Japan International Cooperation Agency
Geological Survey of Japan



LEGEND

Q4: a-alluvium, la-lacustrine-alluvium	g3d: Telmen Complex (granites)	Unconformity
Q3-4: dp-deluvium-proluvium	v3d: Telmen Complex	Main normal fault
Q3: ap-alluvium-proluvium	CB3-O1d: Dalai-Khairkham Formation	Major normal fault
g4sh: Shar-us-gol Granite (granites)	CB2-3kh: Khar-us-gol Formation	Thrust fault (allochthon below)
g4h: Khangai Complex (granites)	CB2gb: Gurbabulag Formation	Thrust fault (allochthon above)
g4t: Tarvagatai Complex (granites)	CB1u2: Ulziit-gol Formation (Upper Member)	
d4t: Tarvagatai Complex (diorites)	Vu1: Ulziit-gol Formation (Lower Member)	
IP2: Subvolcanics	V-CB1u: Ulziit-gol Formation (Undivided)	
P1-2kh: Khureemeral Formation	R3j3: Jiremt-nuru Formation	Locality of radiometric age determination (Ma)
C1o: Orhi-khondii Formation	g2: Riphean Granite	Locality of fossil fauna (reference No)
D1-2er: Erdenetsogt Formation	R2-3kh: Khubulag Formation	Locality of fossil flora (reference No)
D1n: Nariin Formation	PR1b: Bombogor Complex	

Published by:
Geoinformation Section of Bureau of Geological Investigation

Edited by:
O. Tomurtogoo, T. Nakajima, Y. Takahashi, Ch. Minjin,
N. Ichinnorov, and S. Oyungere

Geological Survey and Map Compilation by:
O. Tomurtogoo, Y. Takahashi, T. Nakajima, N. Ichinnorov,
S. Oyungere, Ch. Minjin, Lh. Bayarmandal, Y. Teraoka,
Ch. Kurimoto, F. Tungalag, B. Delgersogt, and K. Naito

Computer Processing by:
Y. Watanabe, G. Dijdmaa, N. Enhtsogt, and M. Arvinzon

GIS SYSTEM: TNTmips (Microimages, Inc.)
PROJECTION: Transverse Mercator Projection
ZONE: 47
SPHEROID: Bessel 1841
ORIGIN LATITUDE: N 00 00 00.00
CENTRAL MERIDIAN: E 99 00 00.00
FALSE EASTING: 500000m
FALSE NORTHING: 0.00000m