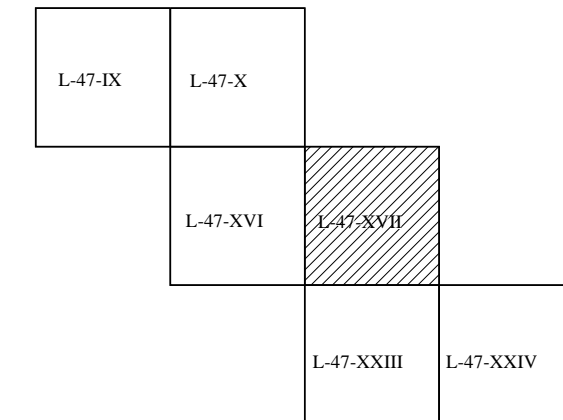
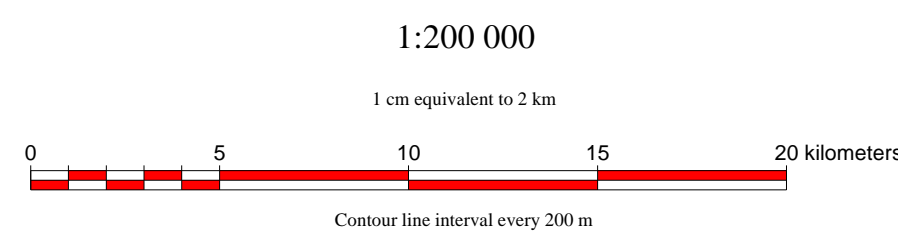
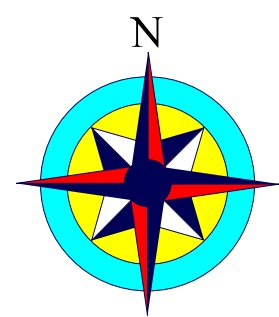
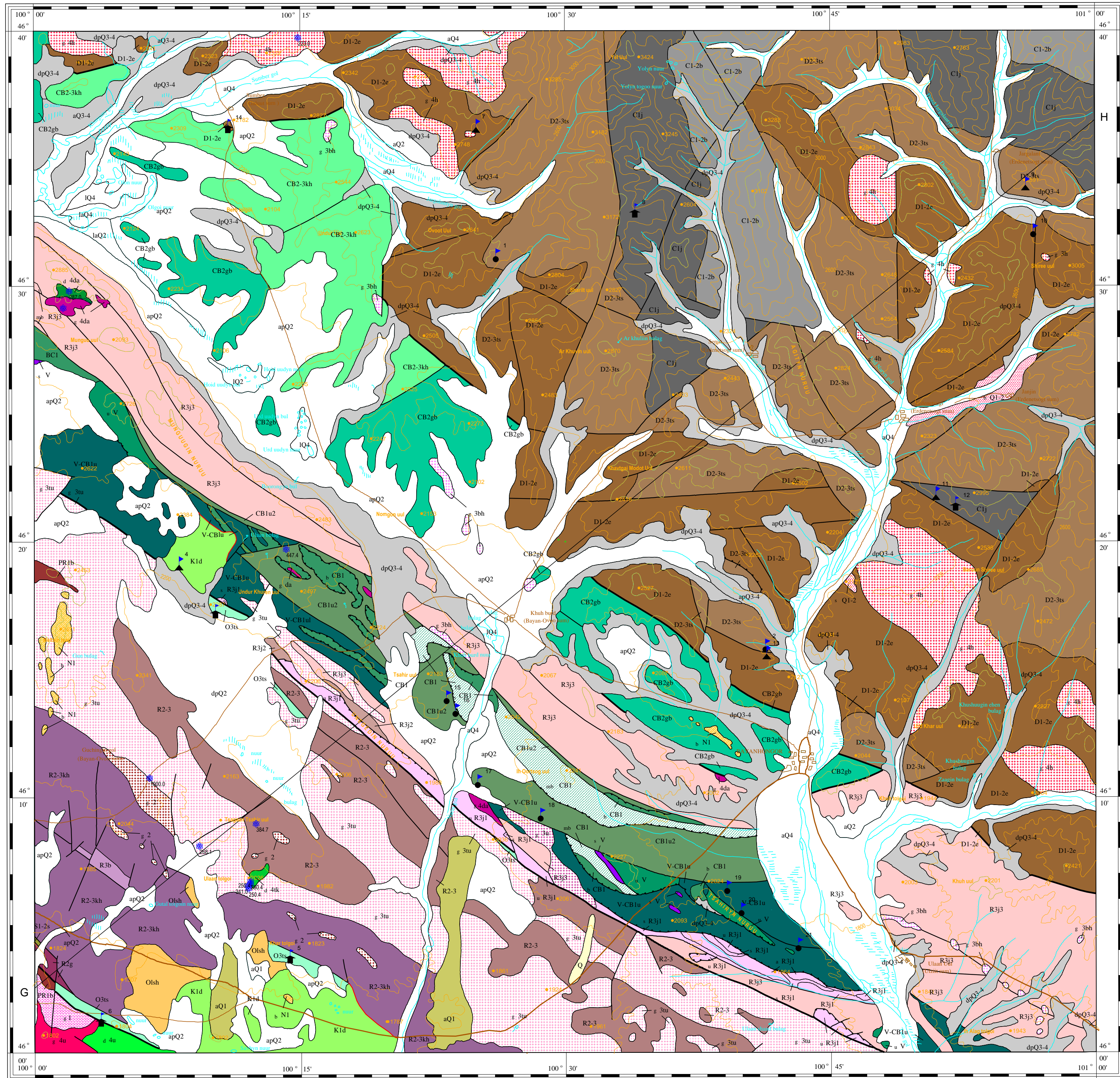


# GEOLOGICAL MAP

## L-47-XVII

MONGOLIA  
Mineral Resources Authority of Mongolia  
Office of Geology  
Bureau of Geological Investigation C 1998

JAPAN  
Japan International Cooperation Agency  
Geological Survey of Japan



### LEGEND


Published by:  
Geoinformation Section of Bureau of Geological Investigation

Edited by:  
O. Tomurtoogoo, T. Nakajima, Y. Takahashi, Ch. Minjin,  
N. Ichinnorov, and S. Oyungere

Geological Survey and Map Compilation by:  
O. Tomurtoogoo, Y. Takahashi, T. Nakajima, N. Ichinnorov,  
S. Oyungere, Ch. Minjin, Lh. Bayarmandal, Y. Teraoka,  
Ch. Kurimoto, F. Tungalag, B. Delgersogt, and K. Naito

Computer Processing by:  
Y. Watanabe, G. Djidmaa, N. Enhsogt, and M. Arvinzon

GIS SYSTEM: TNTmips (Microimages, Inc.)  
PROJECTION: Transverse Mercator Projection  
ZONE: 47  
SPHEROID: Bessel 1841  
ORIGIN LATITUDE: N 00 00 00.00  
CENTRAL MERIDIAN: E 99 00 00.00  
FALSE EASTING: 500000m  
FALSE NORTHING: 0.00000m