

(A)

Lines 14A, 14B & 15

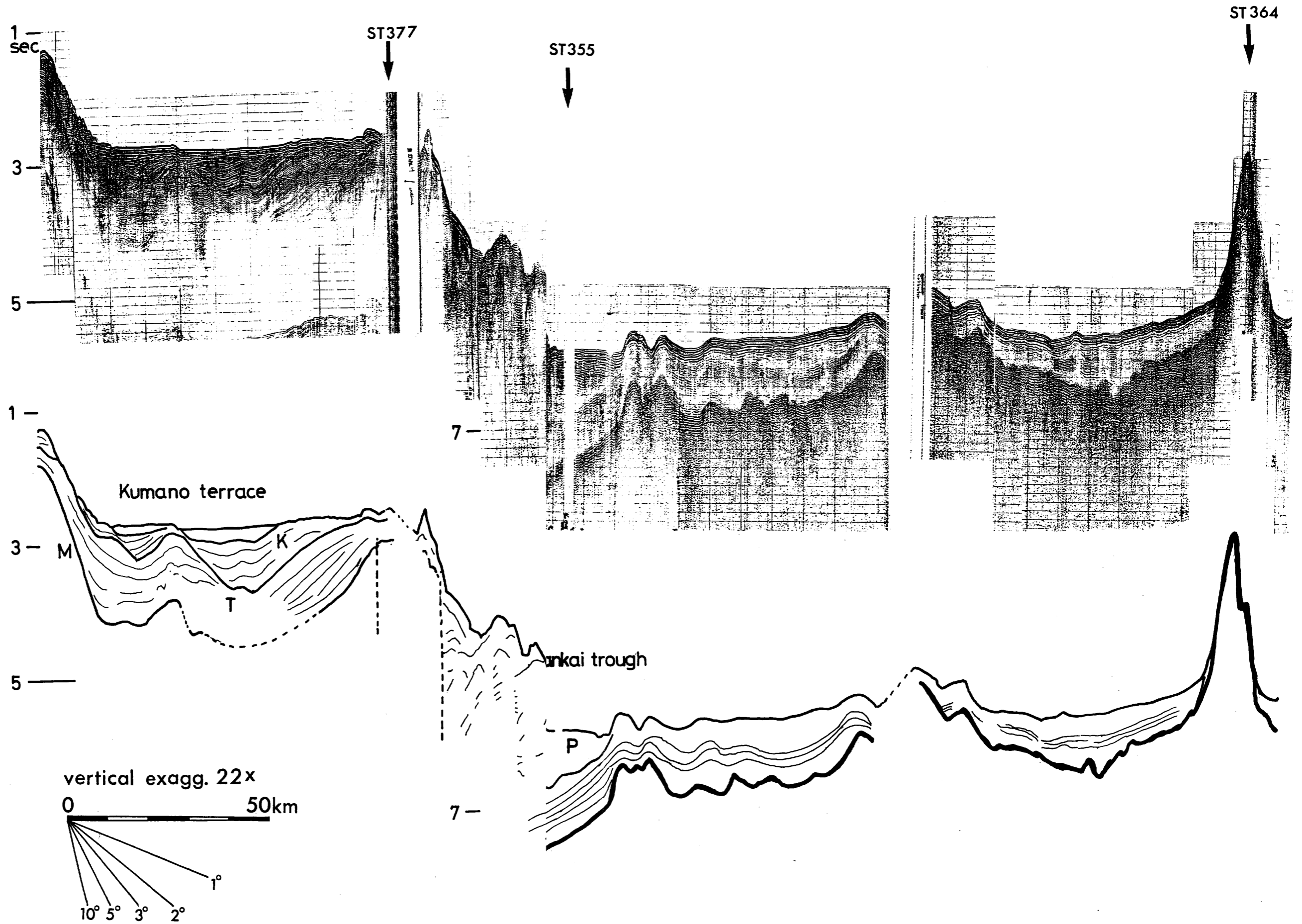


Fig. I-2-A Profiles by seismic section records obtained during GH75-4 cruise. Kumano Terrace-Shikoku Basin.

(B) Line 22,23

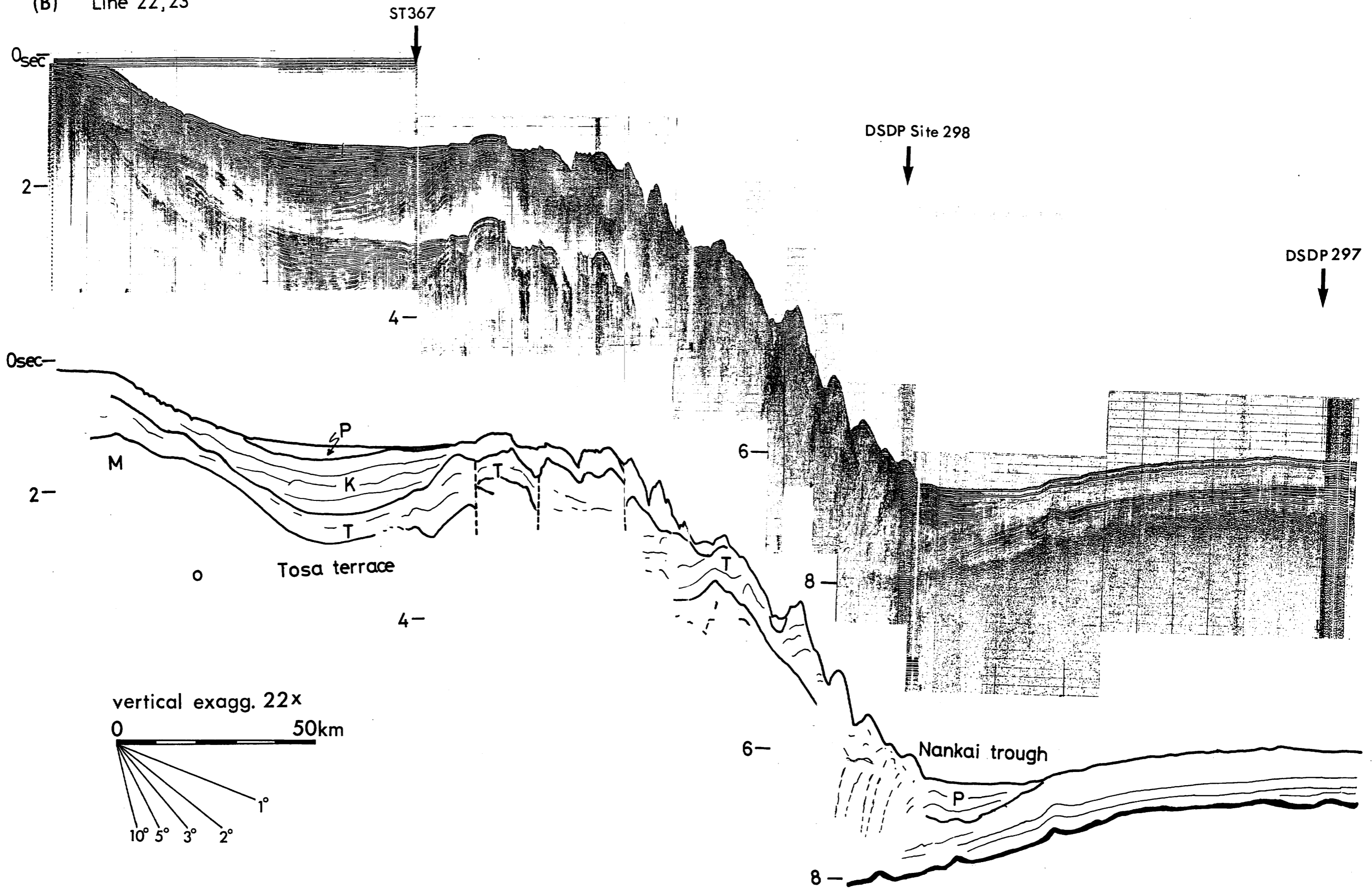


Fig. I-2-B Profiles by seismic reflectivity records obtained during GH75-4 cruise. Tosa Terrace-Shikoku Basin.

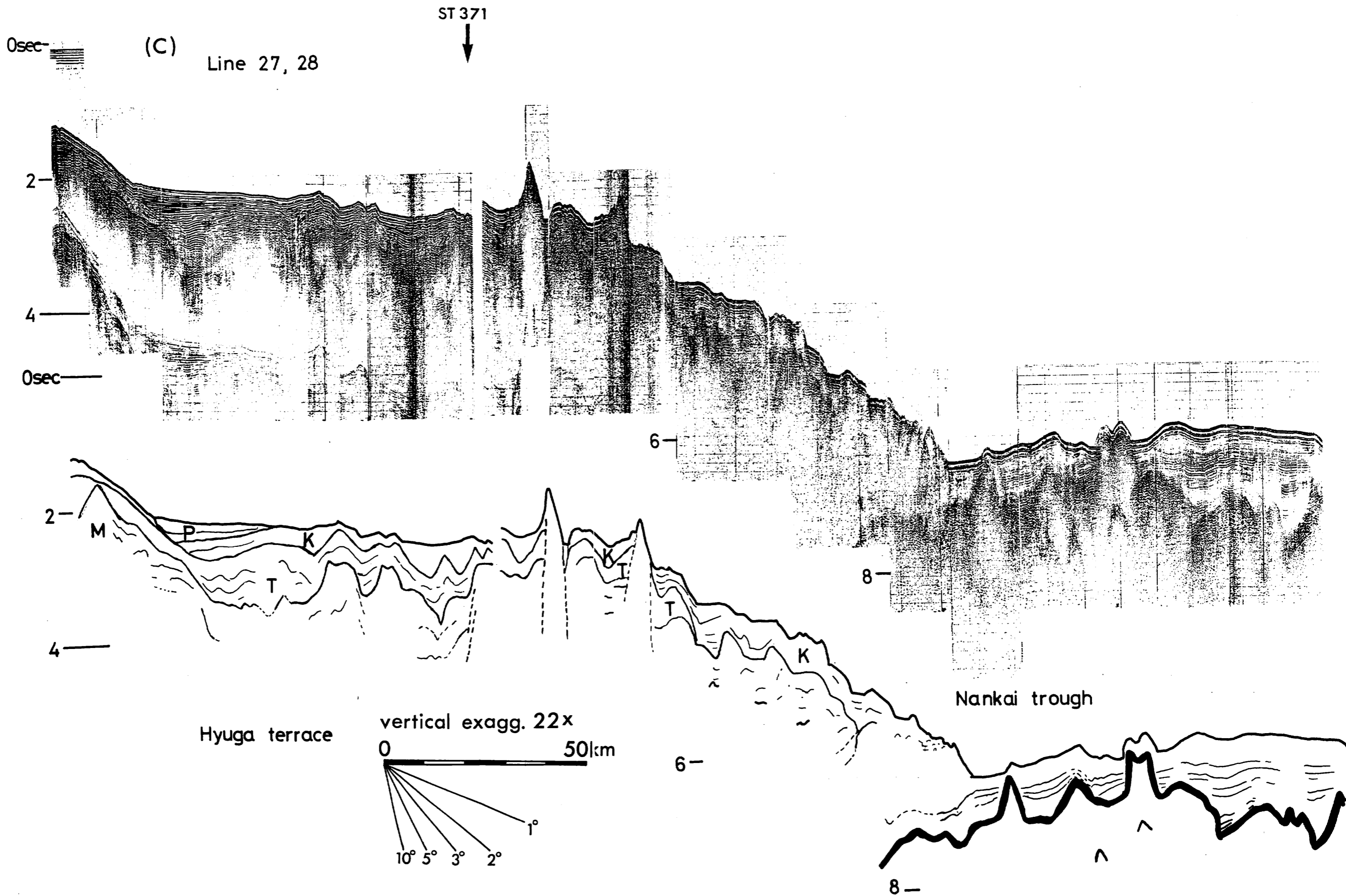


Fig. I-2-C Profiles by seismic reflection records obtained during GH75-4 cruise. Hyuga Terrace-Shikoku Basin.