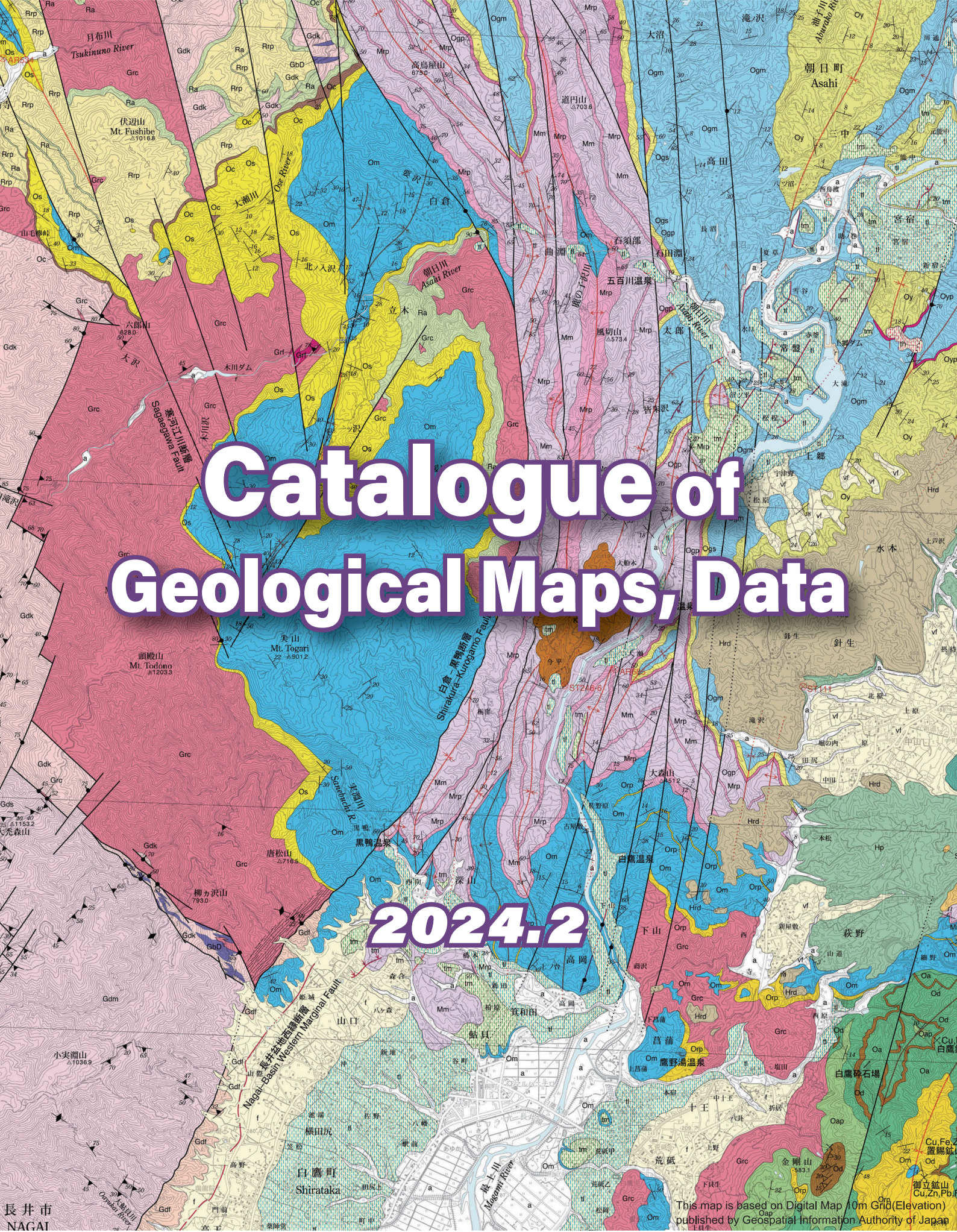


Catalogue of Geological Maps, Data

2024.2



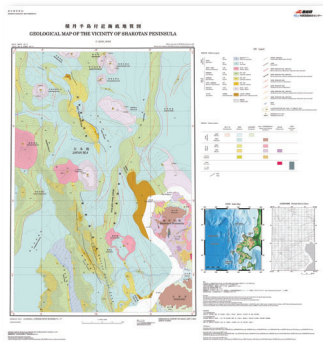
This map is based on Digital Map 10m Grid (Elevation) published by Geospatial Information Authority of Japan

CONTENTS

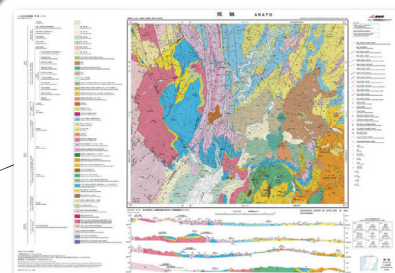
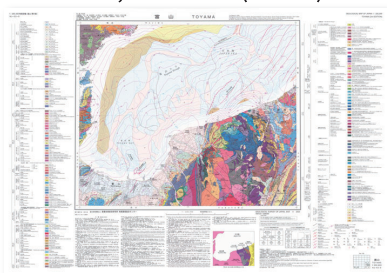
New Publications	3
Seamless Geological Map of Coastal Zone	4
Quadrangle Series 1:50,000	5~13
Index	5
HOKKAIDO Region	6
TOHOKU Region.....	8
KANTO-KOSHIN'ETSU Region with IZU-OGASAWA Islands	9
HOKURIKU, CHUBU-KINKI Region	10
CHUGOKU-SHIKOKU Region	11
KYUSHU Region	12
NANSEI Islands	13
Geological Sheet Map 1:200,000	14
1:2,000,000 Map Series.....	16
Small Scale and Others	17
Geological Sheet Map 1:75,000	18
Geological Sheet Map 1:500,000	19
1:500,000 Neotectonic Map	19
Tectonic Map Series (Strip Map of the Fault System)	19
Marine Geology Map Series	20
Geological Map of Volcanoes	22
Distribution Map of Large-Volume Ignimbrites in Japan.....	22
Miscellaneous Map Series	23
Hydrogeological Maps of Japan	25
Water Environment Map	26
Gravity Map (Bouguer Anomalies) 1:200,000	27
Total Intensity Aeromagnetic Map	28
Geochemistry	29
Geochemical and Risk Assessment Map	29
Fuel Resource Map	29
Geothermal Resources Map	29
Mineral Resources Map 1:500,000	30
Geological Maps of Coal Fields of Japan	31
Geological Maps of Oil and Gas Fields of Japan	31
Asia Area Geoscience	32
Digital Geoscience Map	33
Inquiry	34

NEW PUBLICATIONS

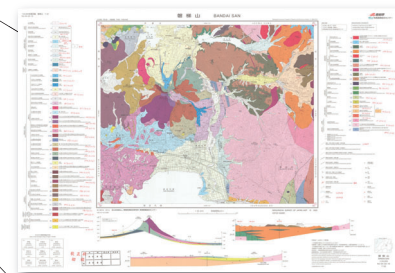
Marine Geology Map Series No.94 Geological Map of the Vicinity of Shakotan Peninsula



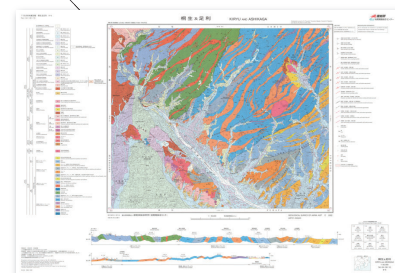
1:200,000 TOYAMA (2nd ed.)



1:50,000 ARATO

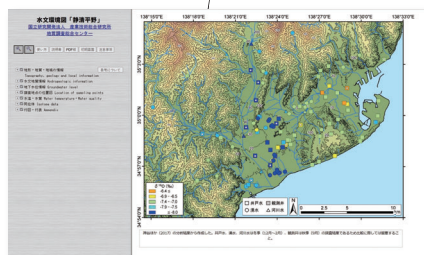
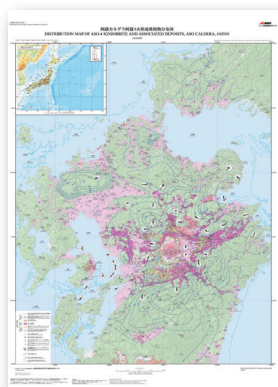


1:50,000 BANDAI SAN



1:50,000 KAWAGOE

Distribution map of large-volume ignimbrites in Japan, No. 3 Distribution Map of Aso-4 Ignimbrite and associated deposits, Aso Caldera, Japan



Water Environment Map No. 13
SEISHIN AREA



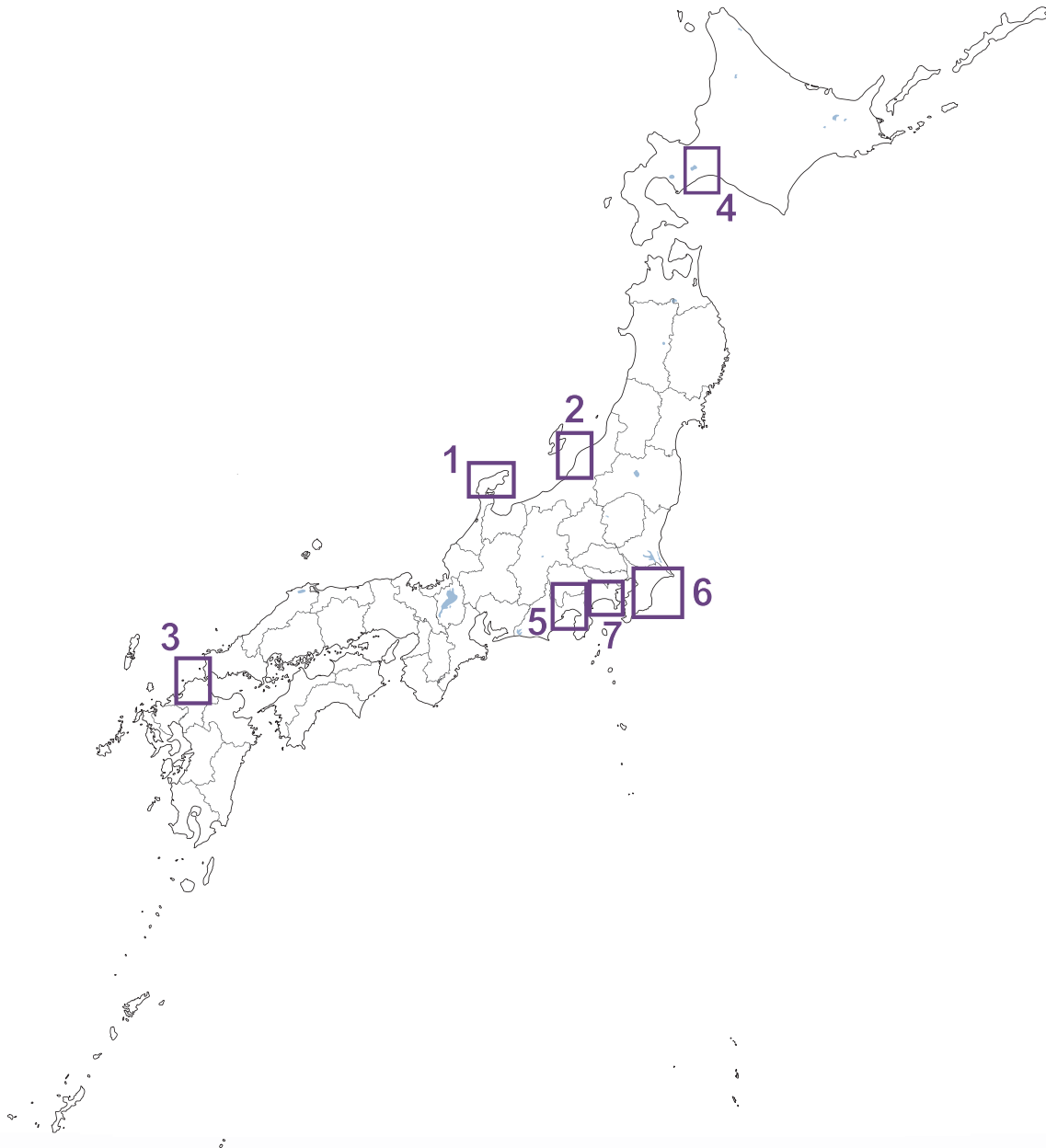
Geochemical and risk assessment map E-9 Geochemical and risk assessment map of subsurface soils of Kyushu region

SEAMLESS GEOLOGICAL MAP OF COASTAL ZONE

Data are downloadable from the website [<https://www.gsj.jp/researches/project/coastal-geology/results/>]

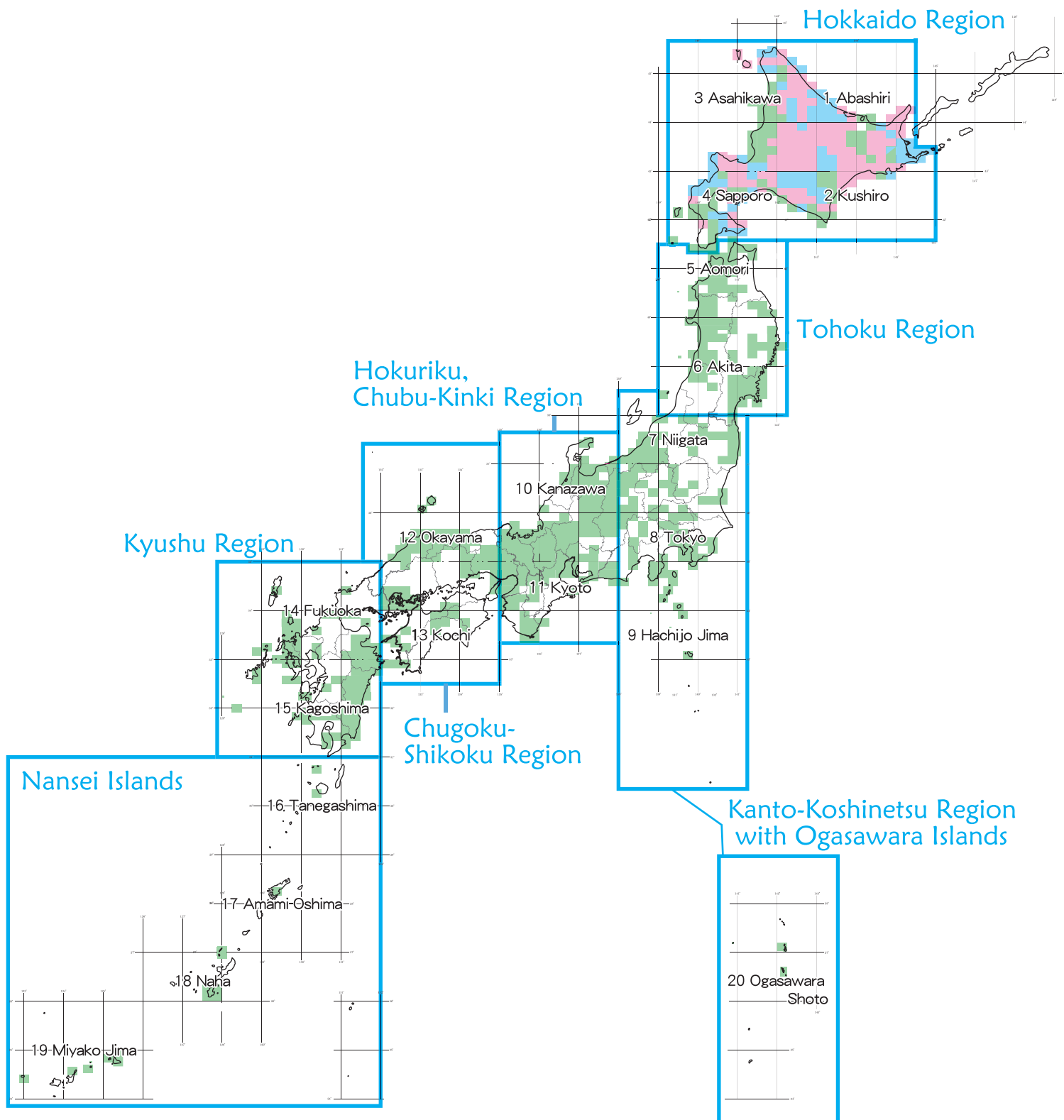
S-1. Seamless Geoinformation of Coastal Zone "Northern coastal zone of Noto Peninsula"	2010	¥1,540
S-2. Seamless Geoinformation of Coastal Zone "Coastal zone around Niigata"	2011	¥1,540
S-3. Seamless Geoinformation of Coastal Zone "Coastal zone around Fukuoka"	2013	¥1,320
S-4. Seamless Geoinformation of Coastal Zone "Southern Coastal Zone of the Ishikari Depression"	2014	¥1,320
S-5. Seamless Geoinformation of Coastal Zone "Northern Coastal Zone of Suruga Bay"	2016	*
S-6. Seamless Geoinformation of Coastal Zone "Eastern Coastal Zone of Boso Peninsula"	2019	*
S-7. Seamless Geoinformation of Coastal Zone "Coastal Zone of Sagami Bay"	2021	*

* *Hardcopy is not available.*



QUADRANGLE SERIES 1:50,000

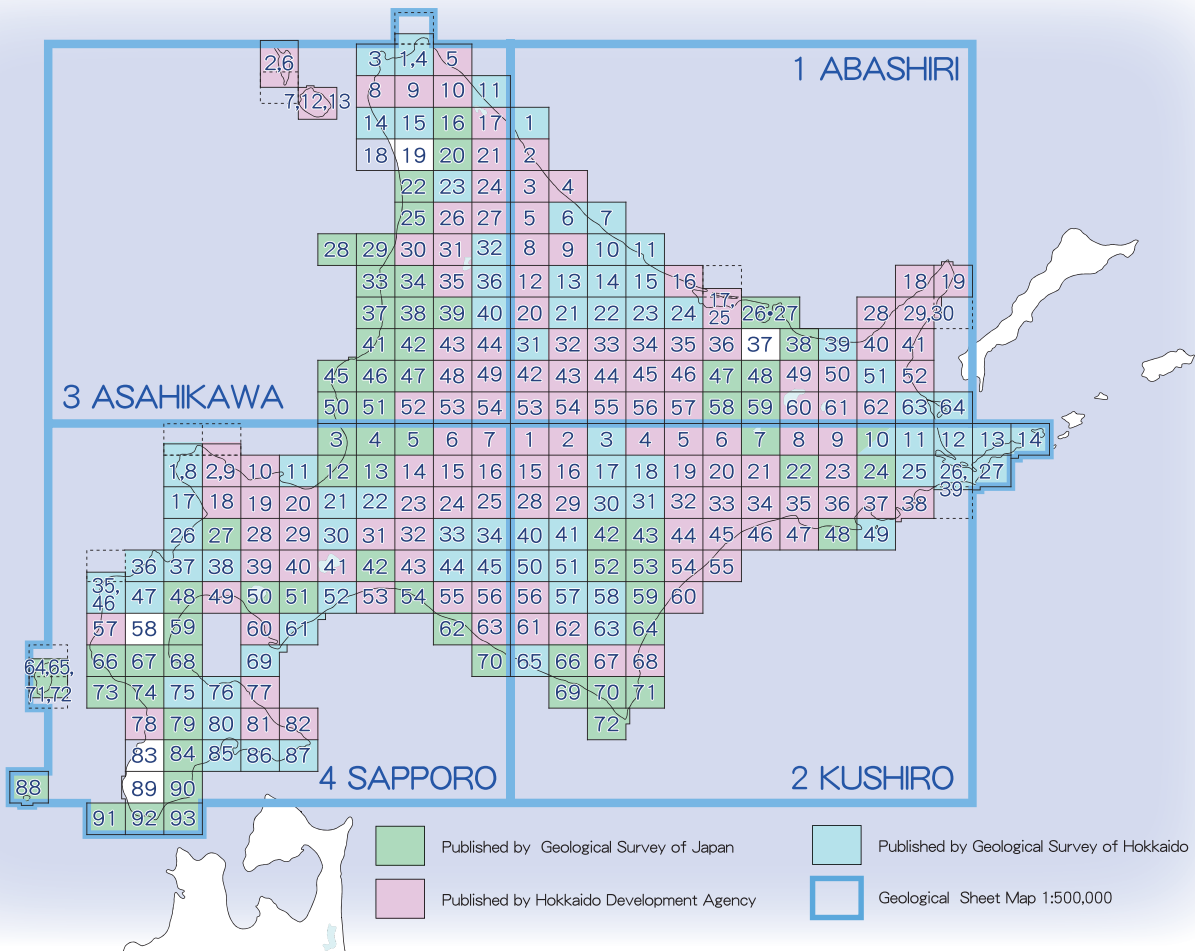
Index



QUADRANGLE SERIES 1:50,000

HOKKAIDO Region

Data are downloadable from the website
(https://www.gsj.jp/Map/index_e.html)



: Geological maps (1:50,000) with asterisks (: Published by Geological Survey of Hokkaido.) are sale by Yamanote Museum [<http://www.yamanote-museum.com/> (Web page of Japanese)].

1. ABASHIRI

1. Menashidomari	1961	*
2. Esashi	1962	¥770
3. Otchube	1961	¥770
4. Otoshibe	1959	¥770
5. Niupu	1960	
6. Omu	1966	*
7. Sawaki	1964	*
8. Sanru	1960	
9. Kamiokoppe	1969	¥770
10. Okoppe	1974	*
11. Monbetsu	1968	*
12. Shimokawa	1955	
13. Nishiokoppe	1980	*
14. Takinoue	2003	*
15. Kamishokotsu	2003	*
16. Nakayubetsu	1962	¥770
17, 25. Saroma Ko & Sanriban-ya	1964	¥770
18. Rusha Gawa	1965	¥770
19. Shiretoko Misaki	1971	¥770
20. Okushibetsu	1952	
21. Shokotsu Dake	1981	*
22. Tatsuushi	2008	*
23. Maruseppu-Hokubu	1988	*

24. Engaru	1990	*
26-27. Abashiri	2018	¥1,650
28. Utoro	1961	¥770
29, 30. Rausu (comp. Chienbetsu)	1970	¥1,350
31. Aibetsu	1964	*
32. Kamikawa	1970	¥935
33. Shirataki	1964	¥770
34. Maruseppu	1967	¥770
35. Ikutawara	1963	¥770
36. Tanno	1968	¥770
38. Koshimizu	1959	
39. Shari	1960	*
40. Minehama	1962	¥770
41. Shunkarikotan	1963	¥770
42. Toma	1966	¥770
43. Taisetsu Zan	1966	¥935
44. Kamishiyubetsu	1961	¥770
45. Kitamifuji	1964	¥770
46. Rubeshibe	1965	¥770
47. Kitami	1968	
48. Bihoro	1970	
49. Mokoto Yama	1963	¥770
50. Shari Dake	1959	
51. Musa Dake	1960	*
52. Kunbetsu	1961	¥770

53. Shibinai	1968	¥770
54. Asahi Dake	1968	
55. Ishikari Dake	1960	
56. Tsunemoto	1964	¥770
57. Shotoshibetsu	1963	¥770
58. Honki	1965	
59. Kamisato	1966	
60. Kutcharo Ko	1962	¥770
61. Mashu Ko	1962	
62. Nakashibetsu	1967	¥770
63, 64. Shibetsu & Nokke Zaki	1967	*

2. KUSHIRO

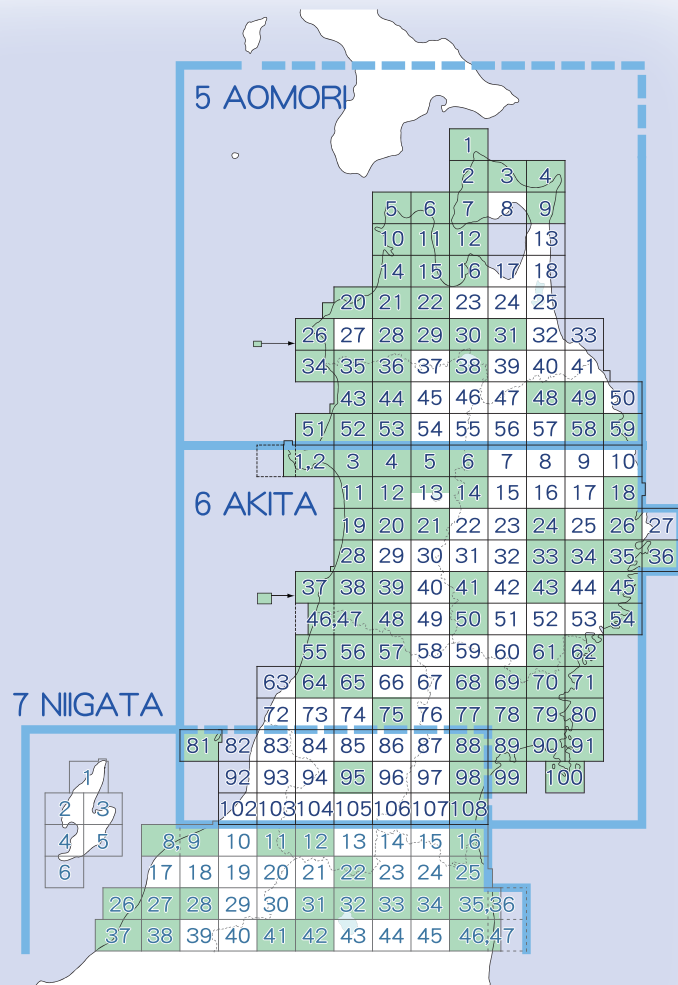
1. Tokachi Dake	1963	¥770
2. Tokachigawa-Joryu	1957	
3. Nukabira	1976	*
4. Meto-Onsen	1970	¥935
5. Rikubetsu	1960	
6. Kamiashoro	1964	¥770
7. Akan Ko	1965	
8. Teshikaga	1967	¥935
9. Isobunnai	1965	¥770
10. Kenebetsu	1988	¥2,420
10. Kenebetsu	1979	*

TOHOKU Region

Data are downloadable from the website
(https://www.gsj.jp/Map/index_e.html)

5. AOMORI

1,2.	Oma & Sai	1962	
3.	Ohata	1957	¥550
4.	Shiriya Zaki	1977	¥1,430
5.	Minmaya	1957	¥550
6.	Horozuki	1958	¥550
7.	Mutsu-Kawauchi	1975	¥1,540
9.	Chikagawa	1961	
10.	Kodomari	1959	
11.	Kanita	1959	
12.	Wakinosawa	1976	¥990
14.	Kanagi	1966	
15.	Aburakawa	1981	¥1,980
16.	Asamushi	1983	¥1,980
20.	Ajigasawa	1985	¥3,190
21.	Goshogawara	1970	
22.	Aomori-Seibu	2013	¥1,760
26.	Fukaura	1968	
28.	Hirosaki	1962	
29.	Kuroishi	1990	¥3,740
30.	Hakkoda San	2004	¥4,400
31.	Towada	2005	¥3,960
34.	Iwadate	1963	
35.	Nakahama	1983	¥2,640
36.	Daira-Kozan	1962	
38.	Towada Ko	2019	¥2,200
43.	Noshiro	1984	¥3,190
44.	Takanosu	1963	
48.	Ichinohe	2018	¥2,310
49.	Rikuchu-Ono	1987	¥2,860
51.	Ugo-Hamada	1985	¥2,640
52.	Moritake	1985	¥3,080
53.	Yonaizawa	1973	
58.	Rikuchu-Seki	2021	¥2,200
59.	Rikuchu-Noda	1962	



Published by Geological Survey of Japan

Geological Sheet Map 1:500,000

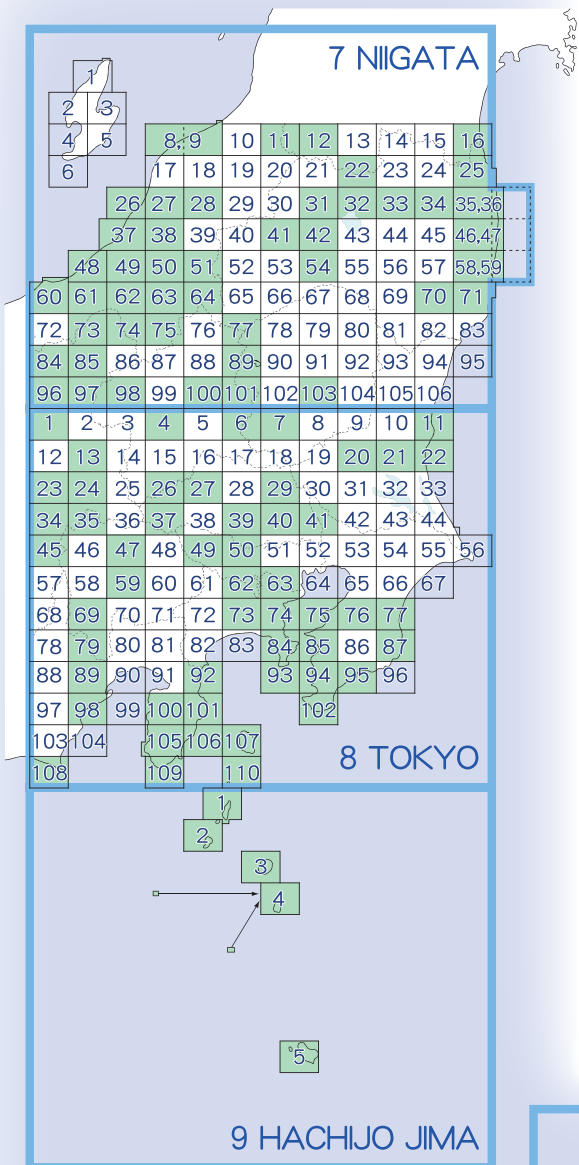
6. AKITA

1,2.	Toga and Funakawa (2nd ed.)	2011	¥4,290
3.	Gojome	1970	
4.	Aniai (2nd ed.)	2012	¥3,520
5.	Moriyoshi yama	1957	¥550
6.	Hachimantai	1964	
11.	Akita (copy)	1977	¥1,980
12.	Taihei Zan	1981	
13.	Tazawa Ko (northern part)	1958	¥550
14.	Shizukuishi	1987	¥2,640
18.	Taro	1970	
19.	Ugo-Wada	1976	
20.	Kariwano	1994	¥2,530
21.	Kakunodata	2020	¥1,760
24.	Hayachine San	2013	¥1,870
26.	Miyako	1984	¥1,980
28.	Honjo	1977	
33.	Ohazama	1956	¥550
34.	Tsuchibuchi	1956	¥550
35,36.	Otsuchi & Karo Dake	1964	
37.	Kisakata	1982	
38.	Yashima	1988	¥2,970

39.	Asamai	1979	¥1,980
41.	Kawashiri	1971	
43.	Hitokabe	1955	¥550
45.	Kamaishi	1961	
46,47.	Chokai San & Fukura	1992	¥3,850
48.	Yuzawa	1979	
50.	Yakeishi Dake	1965	
54.	Ryori	2004	¥3,410
55.	Sakata	1979	
56.	Osawa	1989	¥3,190
57.	Uzen-Kanayama	1961	
61.	Senmaya	2002	¥3,190
62.	Kesenuma	1961	
64.	Tsuruoka	1984	¥2,640
65.	Kiyokawa	1986	¥2,750
68.	Iwagasaki	1997	¥4,730
69.	Wakayanagi	1967	
70.	Shizugawa	1996	¥4,510
71.	Tsuya	1993	¥2,860
75.	Obanazawa	1958	¥550
77.	Furukawa	1981	
78.	Wakuya	1969	
79.	Toyoma	1990	¥3,410
80.	Osu	1992	¥2,530
81.	Awashima	1981	¥1,430
88.	Yoshioka	1983	
89.	Matsushima	1982	¥2,750
90.	Ishinomaki	1984	
91.	Yoriiso	1987	¥2,530
95.	Arato	2024	¥2,970
98.	Sendai (copy)	1986	¥3,520
99.	Shiogama	1983	¥2,860
100.	Kinkasan	1974	
108.	Iwanuma	1975	

KANTO-KOSHIN'ETSU Region with IZU-OGASAWARA Islands

Data are downloadable from the website
(https://www.gsj.jp/Map/index_e.html)



7. NIIGATA

- 8, 9. Niigata and Uchino
2016 ¥2,420
11. Iide San 1996 ¥3,300
12. Tamaniwa 1998 ¥4,730
16. Kakuda 1988 ¥3,080
22. Azuma Yama 2018 ¥1,870
25. Soma-Nakamura 1996 ¥5,610
26. Izumozaki 1993 ¥3,520
27. Sanjo 2001 ¥4,510
28. Kamo 2011 ¥4,620
31. Kitakata 2006 ¥3,850
32. Bandai San 2023 ¥3,080
33. Nihonmatsu 1995 ¥3,190
34. Kawamata 2015 ¥1,430
- 35, 36. Haramachi & Omika
1990 ¥4,290

37. Kashiwazaki 1995 ¥4,620
38. Nagaoka (copy) 1991 ¥4,400
41. Miyashita 2004 ¥3,960
42. Wakamatsu 1992 ¥2,860
- 46, 47. Namie & Iwaki-Tomioka
1994 ¥3,630
48. Kakizaki 1996 ¥3,630
49. Okanomachi 1989 ¥3,520
50. Ojiya (copy) 1986 ¥4,840
51. Suhara 2004 ¥4,290
54. Tajima 1999 ¥3,850
- 58, 59. Kawamae & Ide
2002 ¥6,600
60. Takada-Seibu 1989 ¥3,300
61. Takada-Tobu 1994 ¥3,190
62. Matsunoyama Onsen
2000 ¥4,070
63. Tokamachi (copy)
1985 ¥4,180
64. Hakai San 1992 ¥2,970
70. Takanuki 1973

71. Taira 1961
73. Iiyama 2000 ¥6,050
74. Naeba San 1993 ¥2,970
75. Echigo-Yuzawa 1981
77. Hiuchi Dake 1956 ¥550
84. Togakushi 2003 ¥4,620
85. Nakano 1992 ¥2,750
89. Nantai San 1956
96. Nagano (copy) 1986 ¥3,630
97. Suzaka 1955
98. Kusatsu 1957
100. Numata 1954
101. Ashio 1954
103. Utsunomiya 2010 ¥3,410

8. TOKYO

1. Sakaki 1980
4. Haruna San 2012 ¥3,190
6. Kiryu and Ashikaga
2022 ¥2,860
7. Tochigi 1961
11. Nakaminato 1972
13. Komoro 1979
20. Makabe 1996 ¥3,960
21. Ishioka 1981 ¥1,980
22. Isohama 1975 ¥1,430
23. Suwa 1954
24. Tateshina Yama 1975
26. Manba 1969
27. Yorii 1992 ¥3,300
29. Konosu 2014 ¥2,090
34. Takato 1996 ¥4,620
35. Yatsugatake 1977
37. Mitsumine 2010 ¥3,960
39. Kawagoe 2023 ¥3,630
40. Omiya 2002 ¥3,190
41. Noda 2011 ¥2,860
45. Ichinose (copy) 1983 ¥2,640
47. Mitake-Shosenkyo 1984
49. Itsukaichi 1987 ¥2,640
50. Ome 2007 ¥4,070
59. Kofu 1956
62. Hachioji 2013 ¥1,870
63. Tokyo-Seinanbu
1984 ¥3,630

20 OGASAWARA SHOTO (Islands)

69. Minobu 2018 ¥2,530
73. Fujisawa (copy) 1979 ¥2,640
74. Yokohama (copy) 1982 ¥2,530
75. Kisarazu 2004 ¥3,080
76. Anesaki 1984 ¥3,740
77. Mobarra 2016 ¥2,200
79. Nanbu 2014 ¥2,640
84. Yokosuka 1998 ¥2,970
85. Futtsu 2005 ¥6,930
87. Kazusa-Ohara 2019 ¥2,530
89. Shimizu 1990 ¥2,970
92. Atami 2011 ¥2,970
93. Misaki 1980 ¥1,430
94. Nago 1990 ¥1,980
95. Kamogawa 1981

Data are downloadable from the website(https://www.gsj.jp/Map/index_e.html)

98.	Shizuoka (copy)	1982	¥1,980
100.	Shuzenji	1956	
101.	Ito (map only, copy)	1970	¥990
102.	Tateyama	2006	¥3,850
105.	Shimoda	1970	
106.	Inatori (copy)	1959	¥1,430
107.	Oshima	1984	
108.	Omae Zaki	1988	¥2,860
109.	Mikomoto Jima	1958	
110.	To Shima	1978	¥1,540

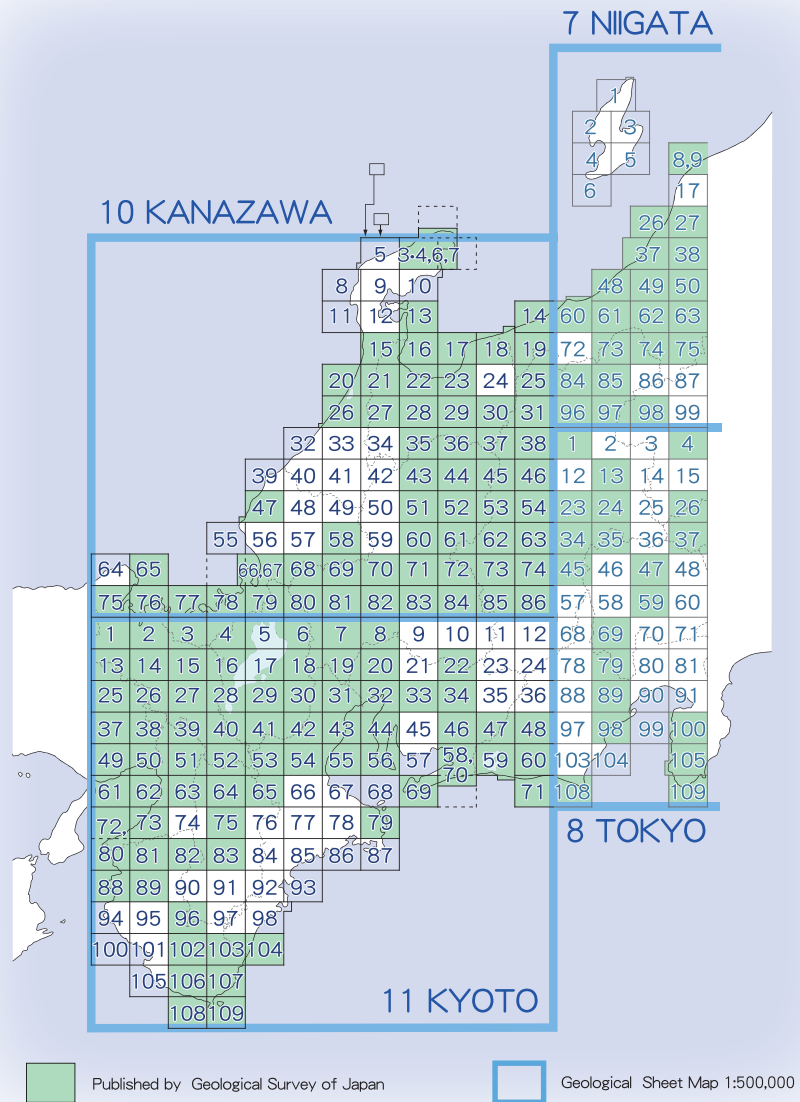
9. HACHIJU JIMA			
1.	Nii Jima	1987	¥2,530
2.	Kozu Shima	1982	¥2,310
3.	Miyake Jima		
4.	Mikura Jima	1980	¥1,320
5.	Hachijo Jima	1959	

20. OGASAWARA SHOTO			
2.	Chichijima Retto	2006	¥3,410
3.	Hahajima Retto	2016	¥1,760

HOKURIKU, CHUBU-KINKI Region

10 KANAZAWA

3•4,6,7.Suzu Misaki, Noto-iida and Horyu Zan			
		2002	¥4,840
13.	Koguchisetō	1965	¥550
14.	Itoigawa	2018	¥1,870
15,16. Ochigata & Abuga Shima			
		1967	
17.	Mikkaichi	1967	
18.	Tomari	2017	¥2,090
19.	Kotaki	2010	¥4,400
20.	Tsubata	1978	¥1,650
21.	Isurugi	1989	¥3,520
22.	Toyama	1963	
23.	Uozu	1972	
25.	Shirouma Dake	2002	¥3,960
26.	Kanazawa	1959	
27.	Johana	1964	
28.	Yatsuo	1960	
29.	Gohyakkoku	1960	
30.	Tate Yama	2000	¥5,170
31.	Omachi (copy)	1989	¥3,080
35.	Shirokimine	1981	
36.	Higashimozumi	1959	
37.	Yarigatake	1991	¥3,190
38.	Shinano-Ikeda	1983	
43.	Hida-Furukawa	1975	
44.	Funatsu	1957	
45.	Kamikochi (copy)	1990	¥3,850
46.	Matsumoto	2009	¥3,740
47.	Fukui	2007	¥4,070
51.	Mikkamachi	1982	
52.	Takayama (copy)	1985	¥3,300
53.	Norikura Dake	1995	¥3,520
54.	Shiojiri	1964	
58.	Arashima Dake	1958	
60.	Hagiwara	1988	¥2,640
61.	Ontake San	1988	¥2,970
62.	Kiso-Fukushima	1998	¥4,400
63.	Ina	1962	
65.	Kanmuri Jima	1958	¥550
66,67. Imajo and Takenami			
		2013	¥1,980
68.	Kanmuri Yama	2015	¥1,980
69.	Neo	1964	
70.	Hachiman	1984	
71.	Gero	1994	¥2,970
72.	Kashimo	1961	
73.	Agematsu	1958	
74.	Akaho	1958	
75.	Miyazu	1960	



76.	Tango-Yura	1958	¥550
77.	Nokogiri Zaki	1957	¥550
78.	Nishizu	2002	¥4,510
79.	Tsuruga	1999	¥3,960
80.	Yokoyama	2000	¥4,070
81.	Tanigumi	1991	¥2,420
82.	Mino	1995	¥2,640
83.	Kanayama	1992	¥3,410
84.	Tsukechi	1961	
85.	Tsumago	1958	
86.	Iida	1958	

11. KYOTO

1.	Oe Yama	1965	
2.	Maizuru	1961	
3.	Obama	1958	
4.	Kumagawa	1998	¥3,960
5.	Chikubu Shima	2001	¥3,080
6.	Omi-Nagahama	1957	
7.	Ogaki	1955	
8.	Gifu	1999	¥4,070
13.	Fukuchiyama (copy)	1990	¥3,520
14.	Ayabe (copy)	1989	¥3,740
15.	Yotsuya	1994	¥2,750
16.	Kitakomatsu	2001	¥4,180
17.	Hikone-Seibu	1984	¥3,080

Data are downloadable from the website(https://www.gsj.jp/Map/index_e.html)

18.	Hikone-Tobu	1976		43.	Yokkaichi	1984	¥2,970	64.	Sakurai	2001	¥4,400
19.	Tsushima	1979		44.	Handa	1986		65.	Nabari	1998	¥3,520
20.	Nagoya-Hokubu	1984	¥1,980	46.	Goyu	2008	¥3,520	69.	Irago Misaki	2010	¥3,300
22.	Akechi	2020	¥1,980	47.	Mikawa-Ono	1952		72, 80.	Wakayama & Ozaki	1993	¥2,530
25.	Sasayama	1993	¥3,190	48.	Akiha San	1955		73.	Kishiwada	1986	¥4,070
26.	Sonobe (copy)	1991	¥3,190	49.	Kobe	1983	¥3,300	75.	Yoshino Yama	1958	
27.	Kyoto-Seihokubu	1989		50.	Osaka-Seihokubu	1982	¥2,310	79.	Toba	2017	¥1,980
28.	Kyoto-Tohokubu (copy)			51.	Osaka-Tohokubu	2001	¥4,180	81.	Kokawa	2004	¥4,840
		1998	¥4,070	52.	Nara	2000	¥4,070	82.	Koyasan	1959	
29.	Omi-Hachiman	2003	¥4,400	53.	Ueno	1996	¥4,400	83.	Sanjoga Take	1989	¥3,190
30.	Gozaisho Yama (copy)	1989	¥3,520	54.	Tsu-Seibu	1995	¥4,510	88.	Kainan	1956	
31.	Kuwana	1991	¥3,520	55.	Tsu-Tobu	1987	¥1,980	89.	Todorogi	1956	
32.	Nagoya-Nanbu	1986	¥1,980	56.	Morozaki	1987	¥2,310	96.	Ryujin	1981	
33.	Toyota	2021	¥1,870	58, 70.	Toyohashi and Tahara			102.	Kurisugawa	1979	
34.	Asuke	2012	¥1,760			2008	¥3,850	103, 104.	Shingu & Atawa	1955	
37.	Sanda	1988	¥3,190	59.	Hamamatsu (copy)	1972	¥2,640	106.	Esumi	1979	
38.	Hirone	1995	¥3,850	60, 71.	Mitsuke & Kakezuka	1957		107.	Nachi	1957	
39.	Kyoto-Seinanbu	2005	¥4,730	61.	Suma	1984	¥2,310	108.	Tanami	1965	
40.	Kyoto-Tonambu	2013	¥1,650	62.	Osaka-Seinanbu	1985	¥2,310	109.	Kushimoto	1965	
41.	Minakuchi	2003	¥4,510	63.	Osaka-Tonambu (copy)						
42.	Kameyama	1981	¥2,860			1998	¥3,740				

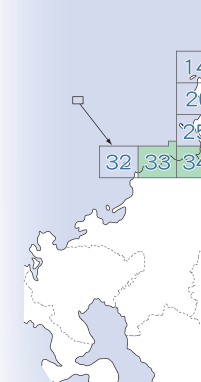
CHUGOKU-SHIKOKU Region

12 OKAYAMA

1.	Saigo	2010	¥4,180
2.	Urago	2000	¥3,520
6.	Etomo	1986	¥2,310
7.	Sakaiminato	1985	¥2,640
8.	Mihonoseki	1985	¥1,980
9, 19.	Akasaki & Daisen	1962	
10, 20.	Aoya & Kurayoshi	1961	
11, 21.	Tottori-Hokubu & Tottori-Nanbu	1963	
15.	Taisha	1989	¥2,420
16.	Imaichi	1991	¥3,190
17.	Matsue	1994	¥3,630
18.	Yonago	1962	
22.	Wakasa	1979	
25, 26.	Iwami-Oda & Oura	1998	¥4,180
27.	Kisuki	2005	¥4,070
28.	Yokota (map only)	1973	
29.	Neu	1964	
30.	Yumoto (northern part)	1962	
31.	Okutsu (northern part)	1961	
32.	Chizu	1966	
34.	Oyaichiba	1954	¥550
35.	Tajima-Takeda	1954	¥550
36, 37.	Yunotsu & Gotsu	2001	¥4,620
38.	Sanbesan	1983	
40.	Tari	1977	
41.	Kamiiwami	1978	¥1,980
44.	Tsuyama-Tobu	1958	¥550
45.	Sayo	1963	
46.	Yamasaki	2002	¥3,850
47.	Ikuno	2005	¥3,520
50.	Akana	1990	¥2,970
56.	Susai	1965	
57.	Kamigori	1980	
58.	Tatsuno	2000	¥3,740
59.	Hojo	1995	¥4,400
68.	Wake	2022	¥2,970
69.	Banshu-Ako	2016	¥1,760
71.	Takasago	2003	¥4,620
83.	Akashi	1990	¥2,640

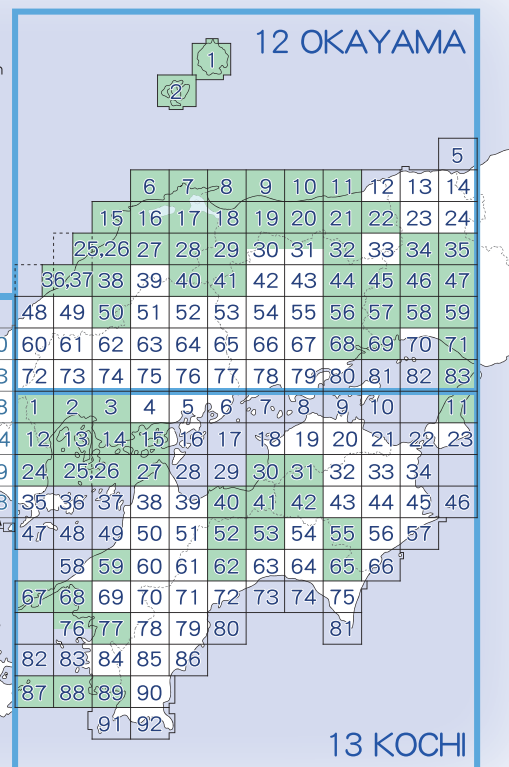
Published by Geological Survey of Japan
Geological Sheet Map 1:500,000

14 FUKUOKA



13 KOCHI

1.	Tsuta	1989	¥2,750	41.	Mishima	1964	
2.	Hiroshima	1991	¥1,650	42.	Kawaguchi	1966	¥660
3.	Kaitaichi	1999	¥2,970	52.	Hibihara	2009	¥3,630
11.	Sumoto	1992	¥2,860	53.	Motoyama	2019	¥2,090
12.	Otake	1986	¥3,080	55.	Kitagawa	2014	¥1,540
13.	Itsuku Shima	1999	¥2,640	59.	Ozu	2010	¥3,410
14.	Kure	1985	¥3,080	62.	Ino	2007	¥5,170
15.	Mitsu	2001	¥2,750	65.	Umaji	2020	¥1,760
24.	Iwakuni	1983	¥2,750	67.	Iyo-Misaki	1959	
25, 26.	Kurahashi Jima & Hashira Jima	1997	¥3,190	68, 76.	Yawatahama & Iyo-Takayama (northern part)	1957	¥660
27.	Imabari-Seibu	1965	¥550	77.	Uwajima	1986	¥3,960
30.	Kan-onji	2017	¥1,980	87.	Tsurumisaki	1988	¥1,980
31.	Ikeda	2021	¥2,200	88, 89.	Iyo-Kashima & Sukumo	1980	¥2,640
40.	Niihama	2013	¥2,640				

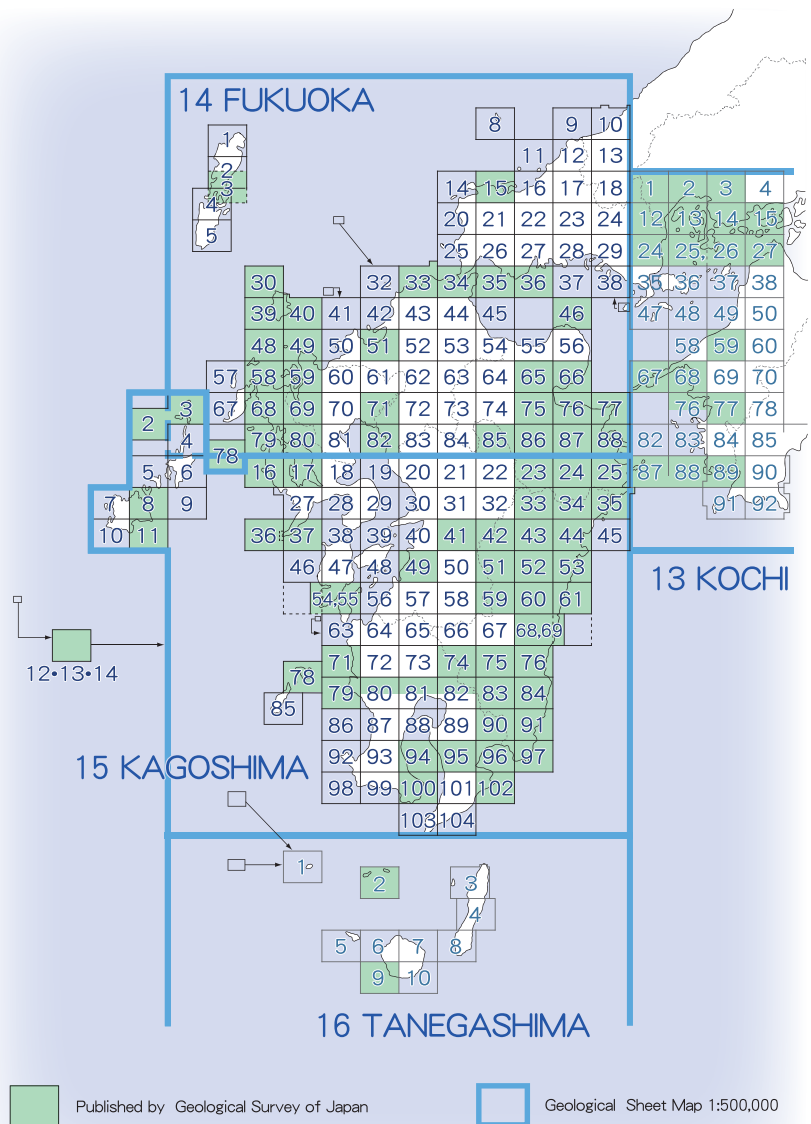


KYUSHU Region

Data are downloadable from the website(https://www.gsj.jp/Map/index_e.html)

14 FUKUOKA

3.	Nii	1961	¥660
15.	Senzaki	2005	¥4,950
30,39,40,48. Katsumoto & Gonoura (include Futakami Jima) & Ashibe			
		1958	¥660
33.	Orio	1993	¥3,300
34.	Kokura	1998	¥4,070
35.	Ube	1956	¥550
36.	Ube-Tobu	1955	¥550
46.	Hime Shima	1997	¥2,860
49.	Yobuko	1955	¥550
51.	Fukuoka	1994	¥4,070
58.	Hirado	1955	¥550
59.	Karatsu	1956	
65.	Toyooka	1993	¥2,640
66.	Bungo-Kitsuki	2005	¥4,290
68.	Sasebo	1989	¥3,080
69.	Imari	1959	
71.	Saga	2010	¥3,520
75.	Beppu	1988	¥2,750
76.	Oita	1997	¥4,180
77.	Saganoseki	1994	¥2,860
78.	Hizen-Enoshima	1972	¥660
79.	Kakinoura	1958	¥550
80.	Haiki	1982	¥2,420
82.	Omuta	2008	¥2,970
85.	Miyanoharu	1997	¥4,950
86.	Kuju	1963	
87.	Inukai	1992	¥3,740
88.	Usuki	1968	



15 KAGOSHIMA

2,3.	Ojika Jima & Hizen-Hirashima	1990 / 1974	¥2,420
8.	Fukue	1994	¥2,860
11.	Tomie	1977	¥1,320
12,13,14. Danjo Gunto Hokubu & -Nanbu			
		1974	¥660
16.	Konoura	1993	¥3,080
17.	Omura	1966	
23.	Taketa	1977	
24.	Miemachi	1993	¥3,520
25.	Saiki	1990	¥3,300
33.	Mitai	1958	
34.	Kumata	1998	¥3,630
35.	Kamae	1985	¥2,640
36,37. Hizen-Takashima & Nomo Zaki			
		1962	
41.	Tomochi	2005	¥6,490
42.	Kuraoka	1958	¥550
43.	Morotsuka Yama	1982	
44.	Nobeoka	2010	¥3,190
49.	Hinagu	1964	

51.	Shiibamura	1996	¥4,730	90.	Sueyoshi	1994	¥3,410
52.	Mikado	1979	¥1,980	91.	Obi	1959	
53.	Tomitaka	1956	¥550	94.	Tarumizu	1964	
54,55. Oniki Zaki & Ushibuka				95.	Kanoya	1965	
		1982	¥2,640	96.	Shibushi	1965	
59.	Murasho	2009	¥3,520	97.	Toino Misaki	1959	
60.	Osuzu Yama	1991	¥3,850	100.	Kaimon Dake	2005	¥4,070
61.	Tsuno	1956	¥550	102.	Uchinoura	1967	¥660
68,69. Tsuma & Takanabe							
		1986	¥3,960				
71.	Nishikata	1963	¥550				
74.	Kirishima Yama	1958					
75.	Nojiri	1976					
76.	Miyazaki	1984					
78.	Nakakoshiki	1982	¥2,530				
79.	Hashima	1971	¥660				
80.	Sendai (northern part)	1971					
81.	Kajiki (northern part)	1967					
82. Kokubu (northern part)							
		1957	¥550				
83.	Miyakonojo	1977					
84.	Hyuga-Aoshima	1959	¥550				

NANSEI Islands

Data are downloadable from the website(https://www.gsj.jp/Map/index_e.html)

16 TANEGA-SHIMA

2. Satsuma-io Jima	1982	¥2,640
9. Yakushima-Seinanbu	1979	¥1,540

17 AMAMI-OSHIMA

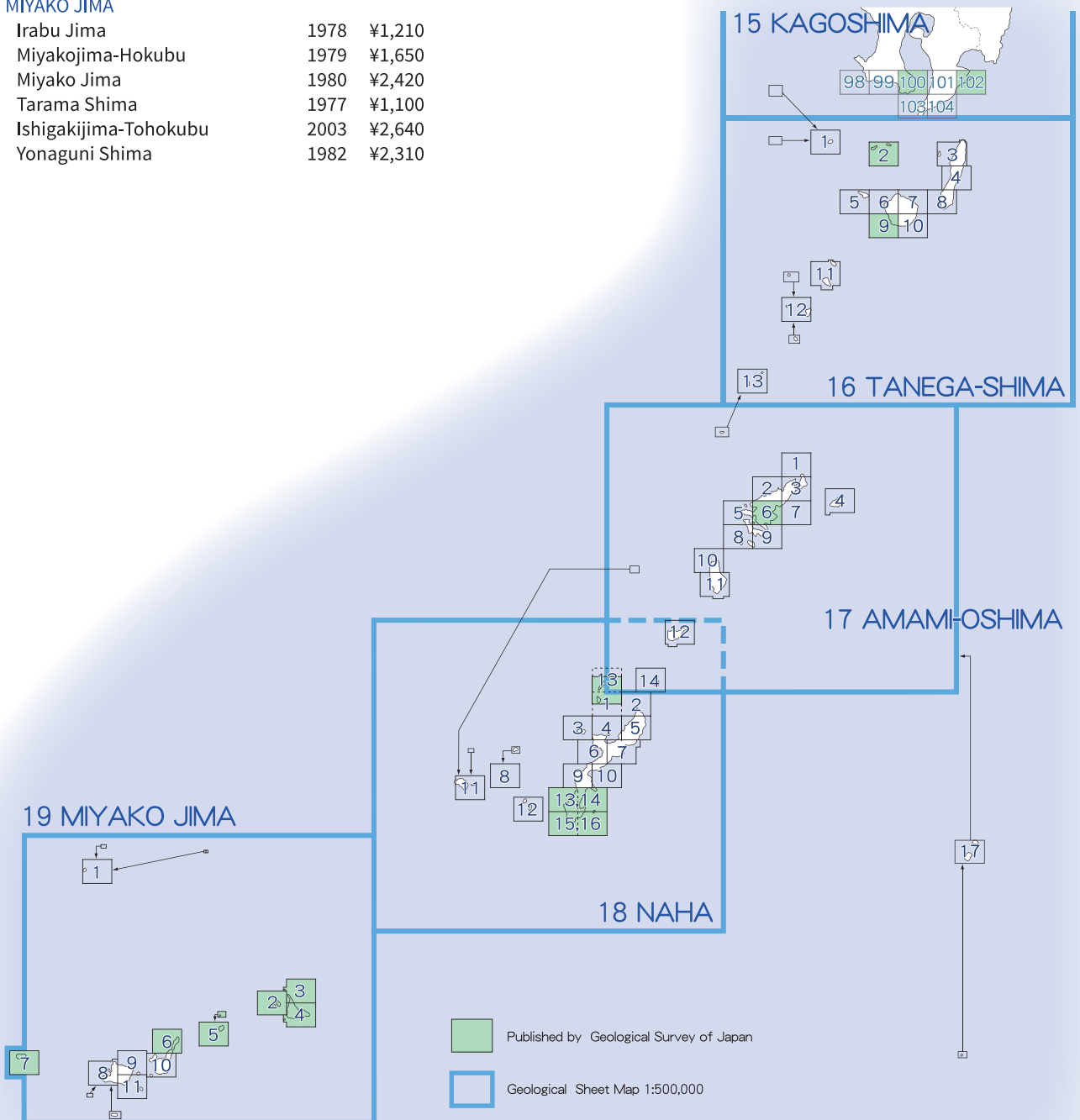
6. Yuwan	1993	¥3,520
17-13,18-1. Iheya Jima & Izena Jima	2000	¥1,980

18 NAHA

18-1,17-13. Iheya Jima & Izena Jima	2000	¥1,980
13,14. Naha and Okinawashi-Nanbu	2006	¥3,740
15,16. Itoman and Kudaka Jima	2006	¥3,630

19 MIYAKO JIMA

2. Irabu Jima	1978	¥1,210
3. Miyakojima-Hokubu	1979	¥1,650
4. Miyako Jima	1980	¥2,420
5. Tarama Shima	1977	¥1,100
6. Ishigakijima-Tohokubu	2003	¥2,640
7. Yonaguni Shima	1982	¥2,310



Data are downloadable from the website(https://www.gsj.jp/Map/index_e.html)

NJ-53

- 4•10. Wajima (2nd ed.) 2019 ¥1,650
- 5. Toyama (2nd ed.) 2023 ¥1,430
- 5,11. Nanao and Toyama 1967
- 6. Takayama (copy) 1989 ¥2,420
- 12•18. Kanazawa 1999 ¥2,860
- 30•36, NI-53-25•31, NJ-52-5. Saigo
2010 ¥2,420

NI-53

- 1. Iida (2nd ed.)(copy) 1990 ¥2,530
- 2,3. Toyohashi and Irago Misaki
2004 ¥3,190
- 7. Gifu (copy) 1992 ¥2,860
- 8. Nagoya (3rd ed.) 2009 ¥3,190
- 9. Ise 2010 ¥2,860
- 10. Kinomoto 1992 ¥1,430
- 13. Miyazu (2nd ed.) 2022 ¥1,760
- 14. Kyoto and Osaka (copy)
1986 ¥2,530
- 15. Wakayama 1998 ¥2,750
- 16. Tanabe 1982 ¥1,650
- 19. Tottori 1974
- 20. Himeji 1981
- 21. Tokushima (2nd ed.) 1995 ¥2,200
- 22•23. Tsurugi San 1969
- 25,31. Matsue and Taisha 1982 ¥2,090
- 26. Takahashi 1996 ¥2,640
- 27. Okayama & Marugame
2002 ¥2,750

- 28. Kochi (2nd ed.) 2018 ¥1,540
- 29. Kubokawa 2006 ¥2,530
- 32. Hamada 1988 ¥2,310
- 33. Hiroshima 1986 ¥2,200
- 34. Matsuyama (2nd ed.) 2016 ¥1,430
- 29•35. Uwajima 1989 ¥2,200

NI-52

- 2,3. Yamaguchi and Mishima
2007 ¥2,860
- 4. Nakatsu 2009 ¥2,860
- 5. Oita (2nd ed.) 2015 ¥1,540
- 6. Nobeoka 1981 ¥2,090
- 9. Kogushi 2006 ¥2,530
- 10. Fukuoka 1993 ¥2,640
- 11. Kumamoto 2004 ¥2,970
- 12,18. Yatsushiro and a part of
Nomo Zaki 2010 ¥3,300
- 14•15. Izuhara 1990 ¥1,430
- 16. Karatsu (2nd ed.) 1997 ¥2,310
- 17. Nagasaki (2nd ed.) 1989 ¥2,090
- 18. Nomozaki 1977 ¥1,320
- 23,24.NH-52-19. Fukue and Tomie
1986 ¥1,430

NH-52

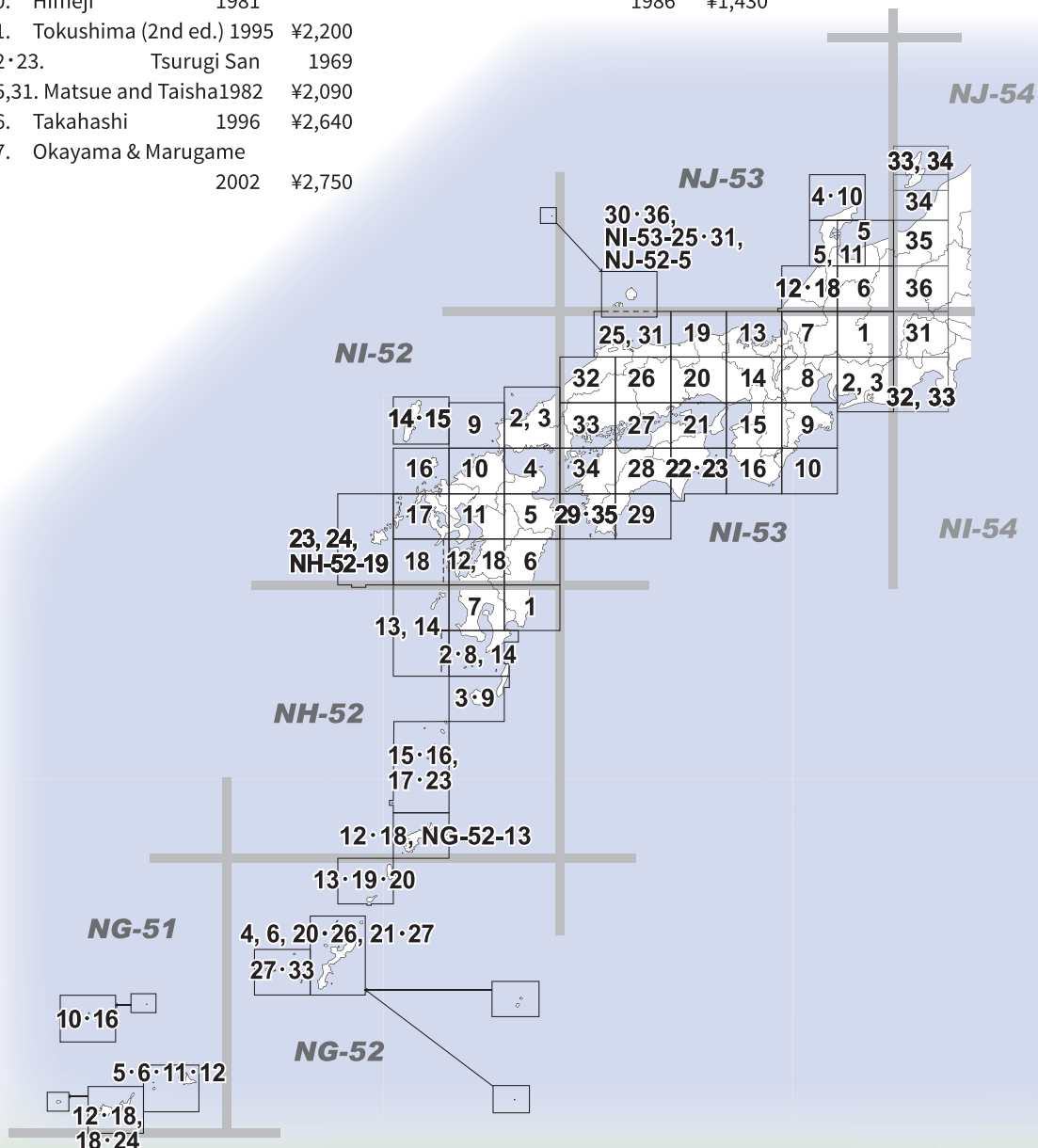
- 1. Miyazaki 1997 ¥2,750
- 2•8,14. Kaimon Dake and a part of
Kuro Shima 2004 ¥2,640
- 3•9. Yaku Shima 2007 ¥2,640
- 7. Kagoshima 1997 ¥2,640
- 12•18, NG-52-13. Amami-Oshima
1994 ¥1,980
- 13,14.Koshiki Jima and Kuro Shima
2004 ¥2,090
- 15•16,17•23. Nakano Shima and
Takara Jima 2008 ¥2,640

NG-52

- 4,6,20•26,21•27. Yoron Jima and Naha
2010 ¥2,750
- 13•19•20. Tokunoshima 2009 ¥2,200
- 27•33. Kume Jima 1993 ¥1,980

NG-51

- 5•6•11•12. Miyako Jima 1978 ¥1,430
- 10•16. Uotsuri Shima 2008 ¥2,200
- 12•18,18•24. Ishigaki Jima 2009 ¥2,530



1:2,000,000 MAP SERIES

4.	Geological Map of Japan (5th ed.), Explanatory Text	2002	¥2,200
5.	Coal Fields of Japan (2nd ed.)	1973	¥990
6.	Mineral Province of Japan (Total 4 sheet)		
	-1. Mineralization of Quaternary Period	1957	
	-2. Mineralization of Neogene Period	1960	
	-3. Mineralization of Mesozoic to Paleogene Period	1960	
	-4. Mineralization of Paleozoic Period	1960	
7.	Distribution Map of Ground Water in Japan	1957	
8.	Distribution Map of Hot Springs in Japan (2nd ed. 2nd printing, copy)	1975	¥1,430
9.	Distribution Map of Oil and Gas Fields in Japan (including Offshore Areas) (2nd ed.)	1976	¥1,320
10.	Hydrogeological Map of Japan	1964	
11.	Volcanoes of Japan (3rd ed.), Explanatory Text	2013	¥1,980*
	<i>*Data are downloadable from the website [https://www.gsj.jp/Map/index_e.html]</i>		
12.	Tectonic Map of Japan (copy), Explanatory Text	1968	¥3,630
13.	Metamorphic Facies Map of Japan, Explanatory Text	1970	¥770
14.	Metallogenic Map of Japan	1973	¥770
15-1.	Metallogenic Map of Japan -Plutonism and Mineralization- (1) Mo, W, Sn	1973	¥990
15.	Metallogenic Map of Japan (Total 2sheets)	1992	¥3,740
	-2. -Plutonism and Mineralization- (2) Cretaceous-Tertiary		
	-3. -Plutonism and Mineralization- (3) Tertiary-Quaternary		
16-1.	Radiometric Age Map of Japan -Granitic Rocks-	1975	
16-2.	Radiometric Age Map of Japan -Metamorphic Rocks-	1977	¥990
17-1.	Distribution Map of Japan -Kaolin, Pyrophyllite and Sericite Clay-, Explanatory Text	1976	¥1,540
17.	Distribution Map of Japan (Total 3sheets)	1979	¥3,300
	-2. -Lead and Zinc Ore Deposits-		
	-3. -Copper Ore Deposits-		
	-4. - Manganese Ore Deposits -		
17.	Distribution Map of Japan (Total 2sheets)	1979	¥2,310
	-5. -Gold, Silver, Antimony, Mercury and Arsenic Ore Deposits-		
	-6. -Sulfur, Iron Sulfide, Gypsum and Barite Ore Deposits-		
18.	Active Faults in Japan, Explanatory Notes	1978	
19-1.	Distribution Map of Hydrothermal Alteration Haloes and Hot Spring Deposits in Japan		
	-Late Pliocene to Holocene-, Explanatory Notes	1979	¥2,420
20.	Distribution Map of Known Geothermal Fields in Japan	1980	¥1,430
21.	Distribution Map of Heat Discharge by Hot Springs in Japan	1980	¥1,430
22.	Computer-Generated Geologic Map of Japan	1990	¥2,420
23.	Magnetic Map of the Japanese Islands, Explanatory Notes	1992	¥2,640

SMALL SCALE AND OTHERS

Small Scale Maps

1:1,000,000 Geological Map of Japan (3rd ed.)	1992	¥6,600
1:1,000,000 Geological Map of Japan -Geological Atlas of Japan (2nd printing copy)	1987	¥4,950
1:3,000,000 Geological Map of Japan	1953	
1:5,000,000 Geological Map of Japan (4th ed.)	1982	¥1,430
1:1,000,000 Gravity Map of Japan (Bouguer Anomalies), Explanatory Text	1999	¥4,070
1:3,000,000 Mineral Distribution Map of Japan (3sheets set)	1960	¥550
I. Metallic Minerals, II. Non-metallic Minerals, III. Fuel Materials excluding Oil and Natural Gas		
1:3,000,000 Geothermal Gradient Map of Japan	1999	¥1,760
Thermal Data Collection in and around Japan	2019	*

*Hardcopy is not available. Data are downloadable from the website (https://www.gsj.jp/Map/index_e.html)

Atlas

Geological Atlas of Japan	1982	
Atlas of Hydrothermal Systems in Japan	2007	¥2,200

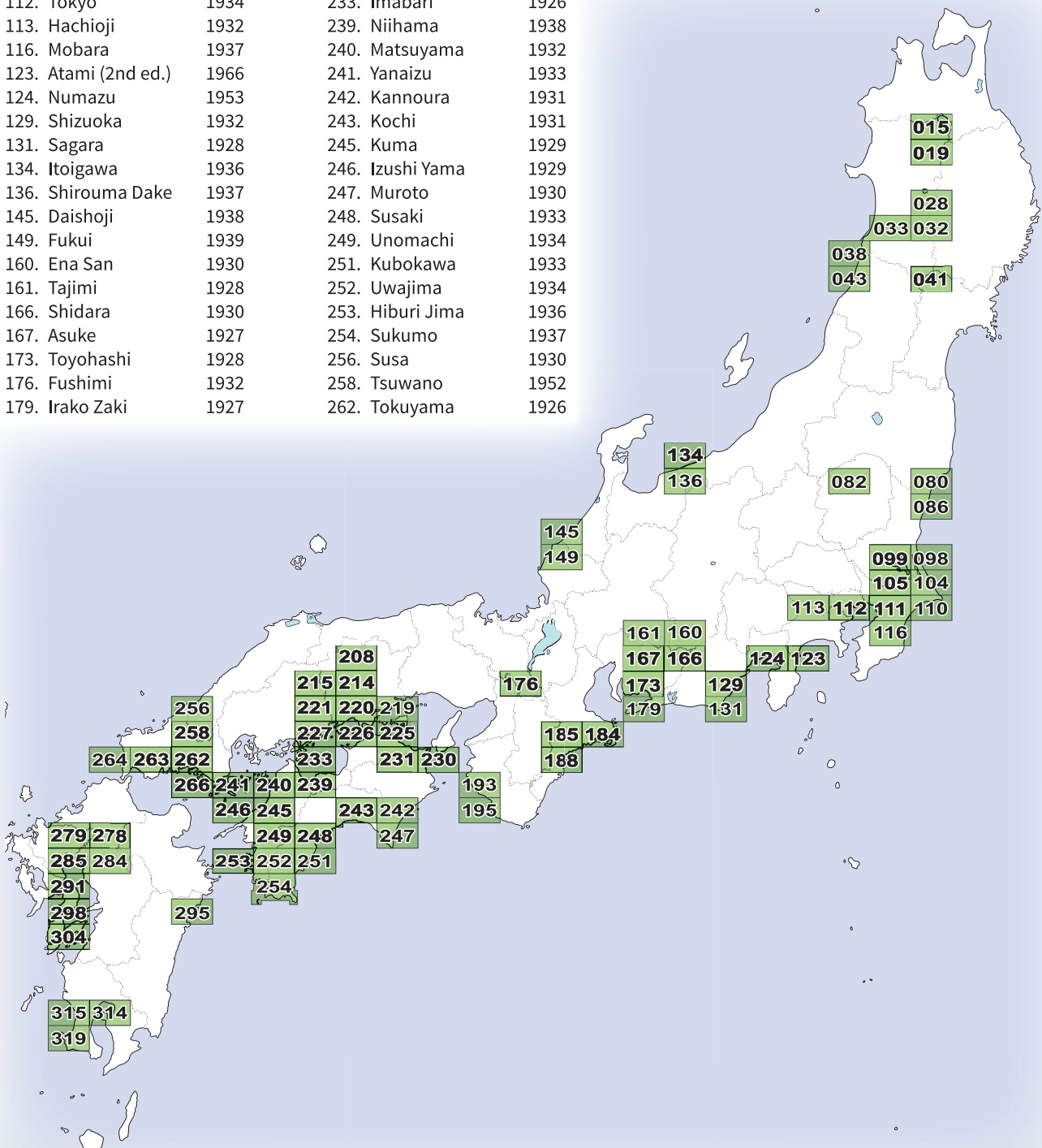
Others

Metallic and Non-Metallic Mineral Deposits of Hokkaido

I. Mineralization of Late Neogene Tertiary to Quaternary Period, 1:800,000	1964	
II. Mineralization of Neogene Tertiary Period, 1:800,000	1964	¥660
III. Mineralization of Late Paleozoic to Early Tertiary Period, 1:800,000	1962	
IV. Geological Map of Hokkaido, 1:800,000	1965	
Explanatory Text (I-IV)	1967	¥1,650
Isogal Contour Maps of Geothermal Area 1:50,000 (1-4 set)	1981	¥4,070
1. The Upper Stream of Tokachi River (Hokkaido), Northern Komagatake (Hokkaido), Southern Komagatake (Hokkaido) and Taisei-Kumaishi (Hokkaido) Geothermal Area		
2. Shimokita (Aomori), Hanamaki Geothermal Area (Iwate), Northern Kurikoma (Akita), Southern Kurikoma (Miyagi), Zao (Miyagi and Yamagata) and Southern Azuma (Fukushima) Geothermal Area		
3. Nasu (Tochigi), Northern Shirane (Nagano), Southern Shirane (Gunmma), Izu (Shizuoka) and Kii Mountainous (Wakayama) Geothermal Area		
4. Garandake (Oita), Waita (Oita and Kumamoto), Aso (Kumamoto), Kirishima (Kagoshima and Miyazaki) and Iojima (Kagoshima) Geothermal Area		

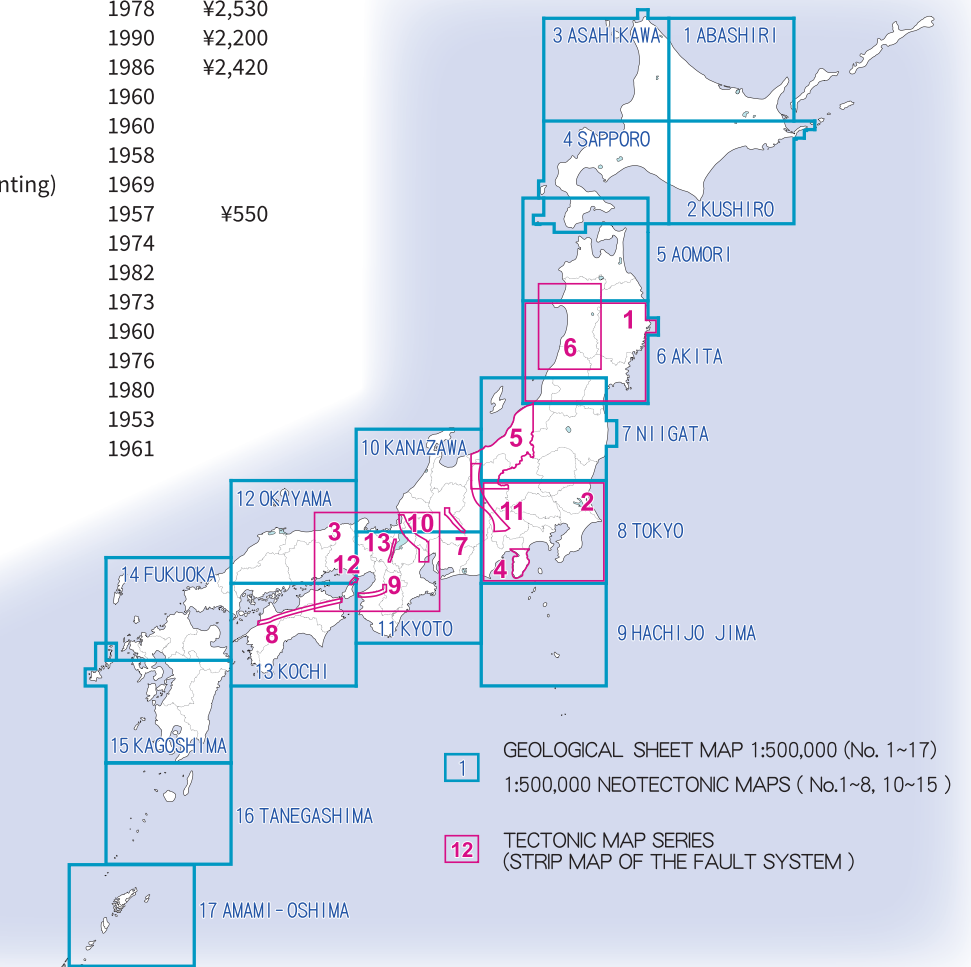
GEOLOGICAL SHEET MAP 1:75,000

15. Kosaka	1931	184. Toba	1929	263. Yamaguchi (2nd ed.)		
19. Hanawa	1933	185. Nojiri	1932		1927	
28. Kakunodate	1939	188. Owase	1932	264. Kogushi	1922	
32. Yokote	1937	193. Gobo	1939	266. Murozumi (2nd ed.)	1927	
33. Honjo	1934	195. Tanabe	1938	278. Mameda	1933	
38. Tobi Shima	1933	208. Kuze	1951	279. Ogi	1934	
41. Onikobe	1958	¥550	214. Takahashi	1938	284. Yamaga	1933
43. Sakata	1934	215. Shobara (2nd ed.)	1928	285. Omuta	1934	
80. Nakoso (2nd ed.)	1950	¥550	219. Saidaiji	1937	291. Shimabara	1935
82. Shiobara	1955	220. Okayama	1927	295. Nobeoka	1939	
86. Sukegawa	1935	221. Fuchu	1930	298. Kuchinotsu	1936	
98. Hokota	1926	225. Takamatsu (2nd ed.)	1948	304. Amakusa	1930	
99. Tsukuba	1927		¥550	314. Kagoshima	1931	
104. Kashima	1933	226. Marugame	1936	315. Ijuin	1931	
105. Narita	1933	227. Onomichi	1931	319. Kaseda	1933	
110. Choshi	1926	230. Tokushima	1952			
111. Chiba	1935	231. Wakimachi	1954			
112. Tokyo	1934	233. Imabari	1926			
113. Hachioji	1932	239. Niihama	1938			
116. Mobarra	1937	240. Matsuyama	1932			
123. Atami (2nd ed.)	1966	241. Yanaizu	1933			
124. Numazu	1953	242. Kannoura	1931			
129. Shizuoka	1932	243. Kochi	1931			
131. Sagara	1928	245. Kuma	1929			
134. Itoigawa	1936	246. Izushi Yama	1929			
136. Shirouma Dake	1937	247. Muroto	1930			
145. Daishoji	1938	248. Susaki	1933			
149. Fukui	1939	249. Unomachi	1934			
160. Ena San	1930	251. Kubokawa	1933			
161. Tajimi	1928	252. Uwajima	1934			
166. Shidara	1930	253. Hiburi Jima	1936			
167. Asuke	1927	254. Sukumo	1937			
173. Toyohashi	1928	256. Susa	1930			
176. Fushimi	1932	258. Tsuwano	1952			
179. Irako Zaki	1927	262. Tokuyama	1926			



GEOLOGICAL SHEET MAP 1:500,000

1.	Abashiri	1984	¥2,200
2.	Kushiro	1978	¥2,530
3.	Asahikawa (2nd ed.)	1990	¥2,200
4.	Sapporo	1986	¥2,420
5.	Aomori	1960	
6.	Akita	1960	
7.	Niigata	1958	
8.	Tokyo (2nd ed. 2nd printing)	1969	
9.	Hachijo Jima	1957	¥550
10.	Kanazawa (2nd ed.)	1974	
11.	Kyoto (4th ed.)	1982	
12.	Okayama	1973	
13.	Kochi (2nd ed.)	1960	
14.	Fukuoka (3rd ed.)	1976	
15.	Kagoshima (2nd ed.)	1980	
16.	Tanegashima	1953	
17.	Amami-Oshima	1961	



1:500,000 NEOTECTONIC MAP

1. ABASHIRI	1987	¥1,650	8. TOKYO (2nd ed.), Explanatory Text	1997	¥3,190
2. KUSHIRO	1985	¥1,870	10. KANAZAWA	1985	¥1,980
3. ASAHIKAWA	1987	¥1,870	11. KYOTO (2nd ed.), Explanatory Text	2002	¥3,960
4. SAPPORO	1984	¥1,760	12. OKAYAMA	1985	¥1,980
5. AOMORI	1986	¥1,980	13. KOCHI	1982	¥1,650
6. AKITA	1983	¥1,870	14. FUKUOKA	1985	¥1,980
7. NIIGATA	1984	¥1,870	15. KAGOSHIMA	1984	¥1,540

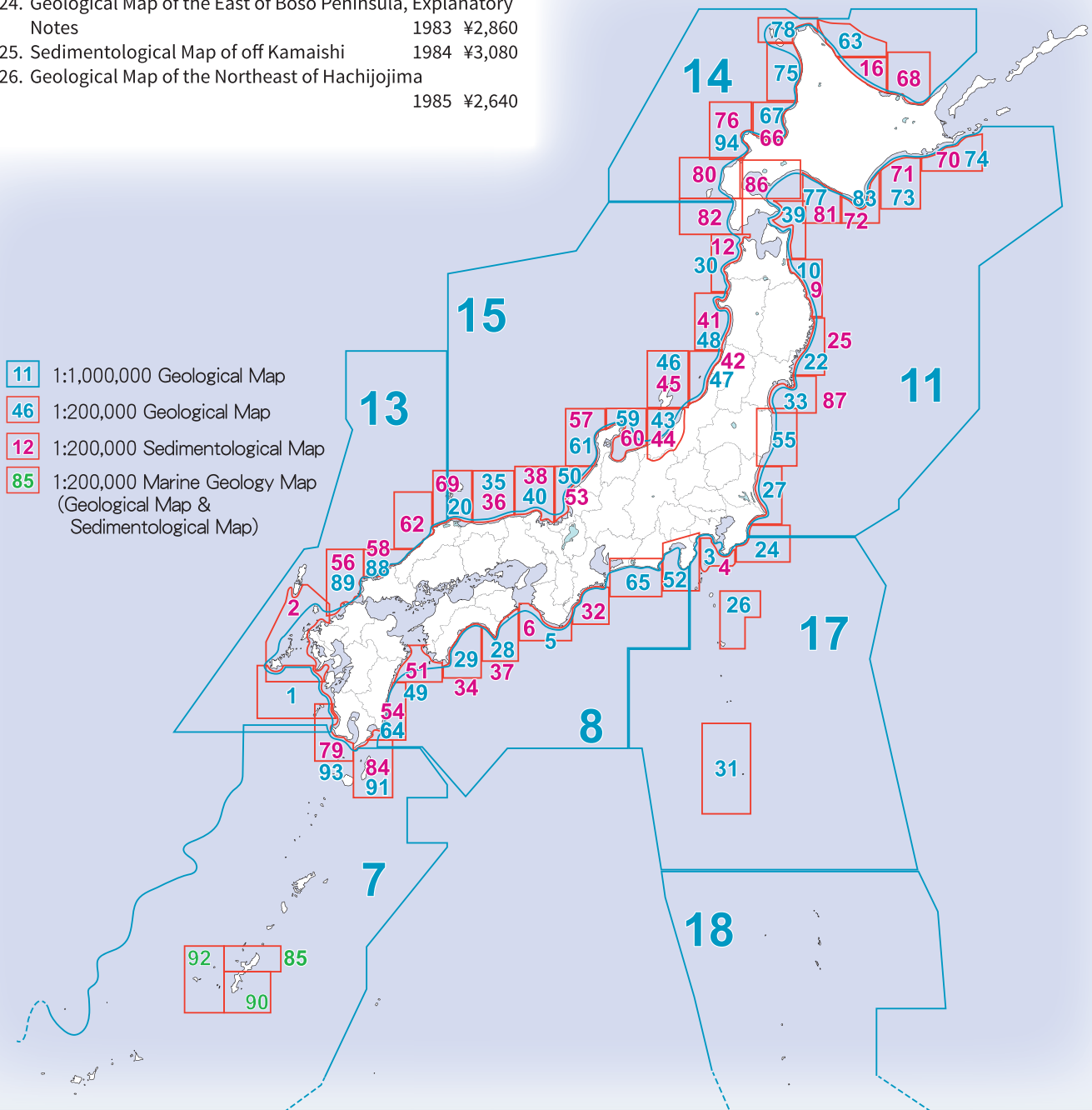
TECTONIC MAP SERIES (STRIP MAP OF THE FAULT SYSTEM)

1. Structural Map Akita, 1:500,000	1968	¥990	9. Strip Map of the Median Tectonic Line Active Fault System in Kinki, 1:25,000	1994	¥2,530
2. Neotectonic Map Tokyo, 1:500,000	1973		10. Strip Map of the Yanagase—Yoro Fault System, 1:100,000	1994	¥2,640
3. Quaternary Tectonic Map Kinki, 1:500,000	1974		11. Strip Map of the Itoigawa—Shizuoka Tectonic Line Active Fault System, 1:100,000	1995	¥2,640
4. Active Faults in Izu Peninsula, 1:100,000, Explanatory Text	1978		12. Strip Map of the Surface Fault Ruptures Associated with the 1995 Hyogo-ken Nanbu Earthquake, Central Japan -The Nojima, Ogura and Nadagawa Earthquake Faults-, 1:10,000 Explanatory Text	1997	¥3,740
5. Neotectonic Map of Shin-etsu District in Japan, 1:200,000	1979	¥1,760	13. Strip Map of the Hanaori Fault, 1:25,000, Explanatory Text	2000	¥2,970
6. Neotectonic Map of Akita—Yamagata District, 1:200,000	1981	¥2,310	14. Rupture Probability Map of Major Active Faults in Japan, 1:2,000,000, Explanatory Text	2005	¥2,860
7. Strip Map of the Atera Fault System, 1:25,000, Explanatory Text	1993	¥3,080			
8. Strip Map of the Median Tectonic Line Active Fault System in Shikoku, 1:25,000, Explanatory Text	1993	¥4,730			

MARINE GEOLOGY MAP SERIES

1:200,000 Geological Map, Sedimentological Map

- | | | |
|--|------|--------|
| 1. Submarine Geological Map Around Koshikijima Island | 1975 | |
| 2. Bottom Sediment Map, Tsushima and Goto Islands Area | 1975 | |
| 3. Sagami-Nada Sea and its Vicinity Submarine Geological Map, Explanatory Notes | 1976 | |
| 4. Sagami-Nada Sea and its Vicinity Sedimentological Map | 1976 | |
| 5. Geological Map of the South of Kii Strait | 1977 | |
| 6. Sedimentological Map of the South of Kii Strait | 1977 | |
| 9. Sedimentological Map of Offing of Hachinohe | 1978 | ¥2,640 |
| 10. Geological Map off Hachinohe, Explanatory Notes | 1978 | ¥2,200 |
| 12. Sedimentological Map of Nishi-Tsugaru Basin | 1979 | ¥2,640 |
| 16. Sedimentological Map off Monbetsu | 1981 | ¥2,750 |
| 20. Geological Map of Oki Strait | 1982 | ¥2,750 |
| 22. Geological Map off Kamaishi, Explanatory Notes | 1983 | ¥2,970 |
| 24. Geological Map of the East of Boso Peninsula, Explanatory Notes | 1983 | ¥2,860 |
| 25. Sedimentological Map of off Kamaishi | 1984 | ¥3,080 |
| 26. Geological Map of the Northeast of Hachijojima | 1985 | ¥2,640 |
| 27. Geological Map of Kashima-nada | 1986 | ¥2,420 |
| 28. Geological Map off Muroto-zaki, Explanatory Notes | 1986 | ¥3,080 |
| 29. Geological Map of Tosa-wan, Explanatory Notes | 1987 | ¥3,080 |
| 30. Geological Map of Nishi-Tsugaru Basin, Explanatory Notes | 1987 | ¥2,970 |
| 31. Geological Map of Sumisu and Torishima Rifts, Izu-Ogasawara Arc, Explanatory Notes | 1988 | ¥4,070 |
| 32. Sedimentological Map of Kumano-nada, Explanatory Notes | 1988 | ¥3,520 |
| 33. Geological Map off Kinkasan, Explanatory Notes | 1990 | ¥4,180 |
| 34. Sedimentological Map of Tosa-wan, Explanatory Notes | 1988 | ¥2,750 |



35. Geological Map Offshore of Tottori Explanatory Notes	1989	¥4,180	70. Sedimentological Map Offshore of Cape Ochiishi	2011	¥3,300
36. Sedimentological Map Offshore of Tottori Explanatory Notes	1990	¥3,410	71. Sedimentological Map Offshore of Kushiro	2011	¥3,080
37. Sedimentological Map Offshore of Cape Muroto, Explanatory Notes	1990	¥2,970	72. Sedimentological Map Offshore of Cape Erimo	2011	¥3,080
38. Sedimentological Map Offshore of Kyo-ga Misaki, Explanatory Notes	1993	¥3,190	73. Geological Map Offshore of Kushiro	2011	¥3,520
39. Geological Map off Shimokita Peninsula, Explanatory Notes	1993	¥3,520	74. Geological Map Offshore of Cape Ochiishi	2012	¥2,640
40. Geological Map Offshore of Kyo-ga Misaki, Explanatory Notes	1993	¥3,740	75. Geological Map of the Vicinity of Teuri Island	2012	¥3,410
41. Sedimentological Map West of Akita, Explanatory Notes	1994	¥3,850	76. Sedimentological Map of the Vicinity of Shakotan Peninsula,	2012	¥2,860
42. Sedimentological Map of the Vicinity of Awashima, Explanatory Notes	1994	¥3,630	77. Geological Map of Hidaka Trough,	2012	¥1,100
43. Geological Map South of Sado Island, Explanatory Notes	1994	¥4,070	78. Geological Map of West of Cape Soya Misaki,	2013	¥1,100
44. Sedimentological Map South of Sado Island, Explanatory Notes	1994	¥3,410	79. Sedimentological Map Offshore of Cape Noma Misaki	2013	¥1,100
45. Sedimentological Map North of Sado Island, Explanatory Notes	1995	¥3,850	80. Sedimentological Map North of Okushiri Island	2013	¥1,100
46. Geological Map North of Sado Island, Explanatory Notes	1995	¥4,510	81. Sedimentological Map of Hidaka Trough	2013	¥1,100
47. Geological Map of the Vicinity of Awashima, Explanatory Notes	1996	¥5,720	82. Sedimentological Map of Okushiri Basin	2013	¥1,100
48. Geological Map West of Akita, Explanatory Notes	1996	¥5,830	83. Geological Map offshore of Cape Erimo	2014	¥1,100
49. Geological Map South of Bungo Strait, Explanatory Notes	1998	¥5,280	84. Sedimentological Map of the Vicinity of Tanegashima	2014	¥990
50. Geological Map Offshore of Gentatsu-se, Explanatory Notes	2000	¥4,290	85. Marine Geology Map of The Vicinity of Northern Okinawa-Jima Island, (Geological Map, Sedimentological Map)	2015	¥1,100
51. Sedimentological Map South of Bungo Strait, Explanatory Notes	1999	¥4,070	86. Sedimentological Map offshore of Muroran	2015	¥990
52. Geological Map of Suruga Bay, Explanatory Notes	1999	¥5,940	87. Sedimentological Map Off Kinkasan	2016	¥990
53. Sedimentological Map Offshore of Gentatsu-se, Explanatory Notes	2000	¥3,960	88. Geological Map of the Vicinity of Mishima,	2016	¥990
54. Sedimentological Map Hyuga-nada, Explanatory Notes	2000	¥3,740	89. Geological Map of Hibiki-Nada	2017	¥990
55. Geological Map of Off Shioya Saki, Explanatory Notes	2001	¥5,500	90. Marine Geology Map of The Vicinity of Southern Okinawa-Jima Island, (Geological Map, Sedimentological Map)	2018	¥990
56. Sedimentological Map Hibiki-nada, Explanatory Notes	2001	¥4,070	91. Geological Map of the Vicinity of Tanegashima	2022	*
57. Sedimentological Map West of Noto Peninsula, Explanatory Notes	2001	¥3,960	92. Marine Geology Map of The Vicinity of Kumejima Island (Geological Map, Sedimentological Map)	2022	*
1:200,000 Geological Map, Sedimentological Map CD-ROM / DVD-ROM [with Explanatory Notes]			93. Geological Map offshore of Cape Noma Misaki	2022	*
58. Sedimentological Map of the Vicinity of Mishima	2002	¥1,760	94. Geological Map of The Vicinity of Shakotan Peninsula	2023	*
59. Geological Map East of Noto Peninsula	2002	¥1,760	<i>* Hardcopy is not available.</i>		
60. Sedimentological Map East of Noto Peninsula	2007	¥3,520	Data are downloadable from the website (https://www.gsj.jp/Map/index_e.html)		
61. Geological Map West of Noto Peninsula	2007	¥3,300	1:1,000,000, 1:2,000,000, 1:3,000,000 Scale		
62. Sedimentological Map Offshore of Cape Hi-no-misaki	2007	¥3,740	7. Geological Map Around Ryukyu Arc, 1:1,000,000		1977
63. Geological Map off Esashi	2007	¥3,410	8. Geological Map off Outer Zone of Southwest Japan, 1:1,000,000		1977
64. Geological Map West of Hyuga-nada	2008	¥3,850	11. Geological Map of the Japan and Kuril Trenches and the Adjacent Areas, 1:1,000,000		1978
65. Geological Map West of Enshu-nada	2008	¥4,620	13. Geological Map of the Southern Japan Sea and Tsushima Straits, 1:1,000,000		1979
66. Sedimentological Map of Ishikari Bay	2008	¥3,850	14. Geological Map of the Japan and Okhotsk Seas around Hokkaido, 1:1,000,000		1979
67. Geological Map of Ishikari Bay	2008	¥3,740	15. Geological Map of the Central Japan Sea, 1:1,000,000		1981
68. Sedimentological Map of Kitami-Yamato Bank	2009	¥3,300	17. Geological Map of the Northern Ogasawara Arc, 1:1,000,000	1982	¥2,860
69. Sedimentological Map of Oki Strait	2010	¥3,190	18. Geological Map of the Southern Ogasawara and Northern Mariana Arcs, 1:1,000,000	1982	¥2,750
			19. Free Air Gravity Anomaly Map of the Central Pacific, 1:2,000,000	1982	¥1,540
			21. Manganese Nodules Distribution in the Central Pacific Ocean, 1:2,000,000	1983	¥1,650
			23. Marine Geological Map Around Japanese Islands, 1:3,000,000	1983	

GEOLOGICAL MAP OF VOLCANO

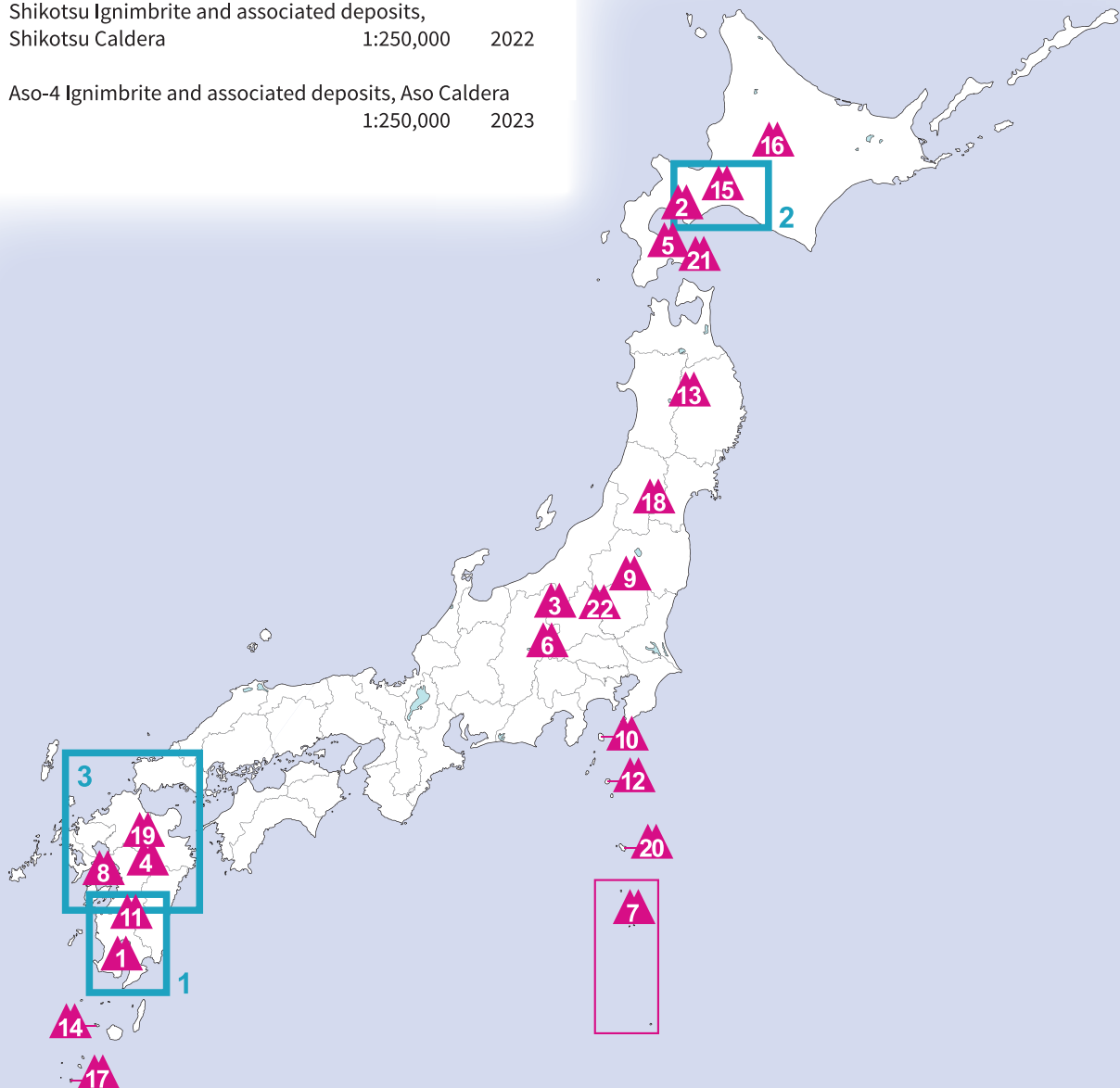
Data are downloadable from the website (https://www.gsj.jp/Map/index_e.html)

1. Sakurajima Volcano (2nd ed.), 1:25,000	2013	¥1,210	12. Miyake Jima Volcano, 1:25,000	2005	¥1,980
2. Usu Volcano (2nd ed.), 1:25,000	2007	¥2,090	13. Iwate Volcano, 1:25,000	2005	¥2,860
3. Kusatsu-Shirane Volcano, 1:25,000 (copy)	1983	¥1,650	14. Kuchinoerabujima Volcano, 1:25,000	2007	¥2,090
4. Aso Volcano, 1:50,000 (copy)	1985	¥1,210	15. Tarumae Volcano, 1:30,000	2010	¥1,870
5. Hokkaido-Komagatake Volcano, 1:50,000 (copy)	1989	¥1,870	16. Tokachidake Volcano, 1:30,000	2010	¥1,980
6. Asama Volcano, 1:50,000	1993	¥1,870	17. Suwanosejima Volcano, 1:20,000	2013	¥1,430
7. Aogashima Volcano and Submarine volcanoes (1:10,000), South of Izu Islands (1:650,000)	1994	¥2,750	18. Zao Volcano, 1:25,000	2015	¥1,210
8. Unzen Volcano, 1:25,000 (copy)	1995	¥1,210	19. Kuju Volcano, 1:25,000	2015	¥1,210
9. Nasu Volcano, 1:30,000	1997	¥2,310	20. Hachijojima Volcano, 1:25,000	2018	¥1,430
10. Izu-Oshima Volcano, 1:25,000	1998	¥1,870	21. Esan Volcano, 1:20,000	2022	¥1,210
11. Kirishima Volcano, 1:50,000	2001	¥1,650	22. Nikko-Shirane and Mitsudake Volcanoes, 1:25,000	2022	¥1,320

DISTRIBUTION MAP OF LARGE-VOLUME IGNIMBRITES IN JAPAN

Data are downloadable from the website (https://www.gsj.jp/Map/index_e.html)

1. Ito Ignimbrite and associated deposits, Aira Caldera
1:250,000 2022
2. Shikotsu Ignimbrite and associated deposits,
Shikotsu Caldera
1:250,000 2022
3. Aso-4 Ignimbrite and associated deposits, Aso Caldera
1:250,000 2023



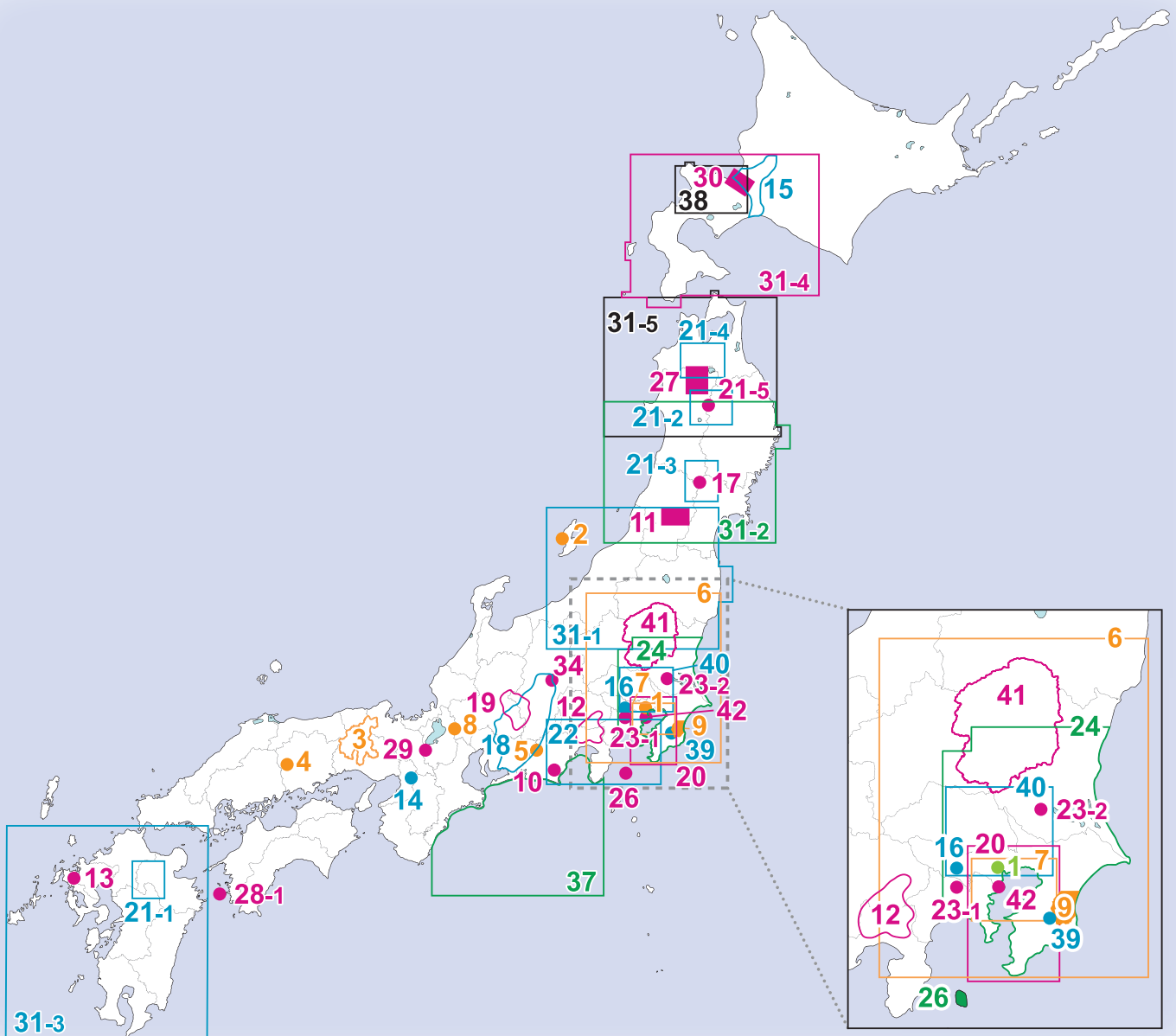
MISCELLANEOUS MAP SERIES

Miscellaneous Map Sr. (Special Sheet)

1.	Geological Map of Tokyo with Explanatory Text, 1:20,000	1888	
2.	Geological Map of Aikawa Mine and its vicinities, 1:6,000	1889	
3.	Geological Map of Ikuno Imperial Mine with Explanatory Text, 1:200,000	1893	
4.	Yoshioka Special Sheet with Explanatory Text, 1:75,000	1921	
5.	Kune Special Geological Map with Explanatory Text, 1:15,000	1923	

Miscellaneous Map Sr.

6.	Compiled Geological Map of Kanto Region, 1:400,000	1951	
7.	Geological Map of Tokyo and its Suburbs, 1:100,000	1952	
8.	Distribution Map of Limestone Grades at Mt.Ibuki-san, 1:20,000	1952	
9.	Geologic Map of Mobarra Gas Field, 1:50,000	1960	
10.	Geological Map of the Kakegawa District, Explanatory Text, 1:50,000	1961	
11.	Geological Map of the Northern Yamagata District, Explanatory Text, 1:50,000	1962	¥990
12.	Geological Map of Mt. Fuji, Explanatory Text, 1:50,000 (copy)	1968	¥1,540
12.	Geological Map of Fuji Volcano (2nd ed.), Explanatory Text, 1:50,000	2016	¥1,870
13.	Geological Map of Northern Sasebo District, 1:25,000	1970	¥990
14.	Geologic Map of West-Side Piedmont and Foot Areas of the Ikoma Mountain-Land, Explanatory Text, 1:25,000	1972	¥880
15.	Geological Map of the Ishikari Alluvial Plain, Explanatory Text, 1:100,000	1972	¥1,320

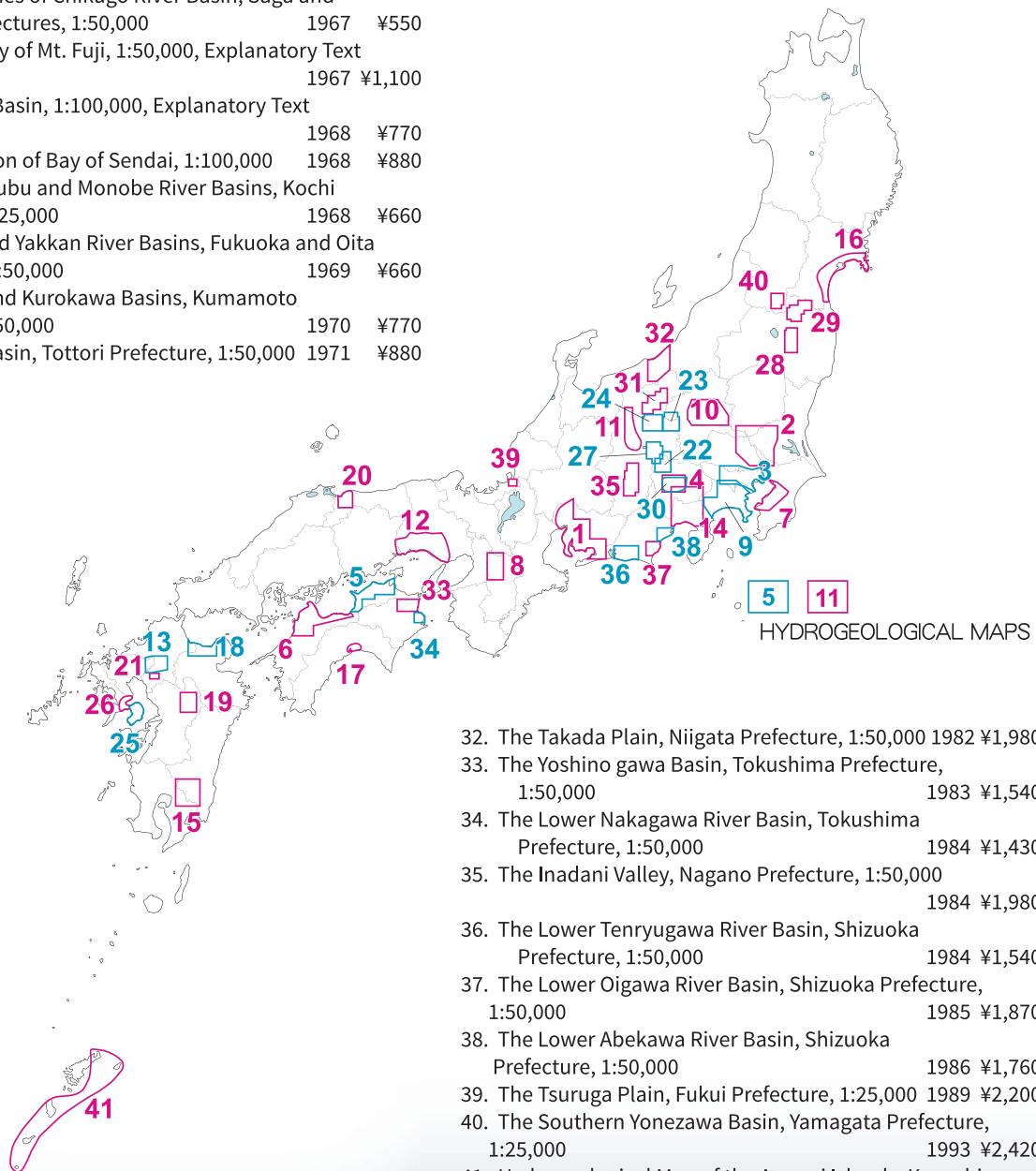


16.	(A package of 16-1, -2a and -2b, Explanatory text)		¥2,640
-1.	Geological Map of Kanto Loam Beds in North Western Part of Tama Hill and others, 1:10,000	1972	
-2a.	Geological Map of Kanto Loam Beds in Gotanda-gawa Basin, kawasaki City, 1:5,000	1972	
-2b.	Geological Map of Kanto Loam Beds in Ikuta Area, Kawasaki, 1:500	1972	
	Explanatory Text	1989	
17.	Geological Map of Onikobe, 1:25,000	1972	¥770*
18.	Geological Map of the Ryoke Belt, Central Japan, 1:200,000	1974	
19.	Tectonic Map Around the Atera Fault, Central Japan, 1:50,000	1976	
20.	Geological Map of Tokyo Bay and Adjacent Areas (2nd ed), Explanatory Text, 1:100,000	1995	¥6,490
21-1.	Geological Map of Hohi Geothermal Area, Explanatory Text, 1:100,000	1982	¥2,530*
21-2.	Geological Map of Sengan Geothermal Area, Explanatory Text, 1:100,000	1985	¥3,300*
21-3.	Geological Map of Kurikoma Geothermal Area, Explanatory Text, 1:100,000	1986	¥4,840*
21-4.	Geological Map of Hakkoda Geothermal Area, Explanatory Text, 1:100,000	1988	¥3,080*
21-5.	Geological Map of the Central Part of the Sengan Geothermal Area, Explanatory Text, 1:50,000	1992	¥4,070*
22.	Gravity Map of Shizuoka, Omaezaki and Yokosuka (Bouguer Anomalies Map), 1:200,000	1982	¥880
23-1.	Environmental Geologic Map of Northern Part of the Sagami Plain and its Surroundings, Explanatory Text, 1:25,000	1984	¥3,520
23-2.	Environmental Geologic Map of the Tsukuba Science City and its Surroundings, Explanatory Text, 1:25,000	1988	¥5,720
24.	Gravity Map of Kanto District (Bouguer Anomalies Map) 1:200,000	1985	¥1,210
25.	Hot Spring Distribution Map of Northern Thailand, 1:1,000,000	1987	¥1,760
26.	The 1986 Eruption of Izu-Oshima Volcano, 1:25,000	1987	
27.	Geological Map for Mineral Resources Assessment of the Hokuroku District, Explanatory Text, 1:50,000	1988	¥5,610
28-1.	Sea Bottom (Geological) Sonar Mosaic -Southern Bungo Strait-, 1:10,000	1988	¥660
29.	Lake-Floor Map Based on Side-Scan Sonar Image -The Southern Part of Lake Biwa-, 1:10,000	1989	¥3,300
30.	Surface Geology of Sapporo and its Surroundings, Hokkaido, 1:30,000, Explanatory Text	1991	¥4,730
31-1.	Geothermal Resources Map of Niigata Area, Explanatory Text, 1:500,000	1993	¥4,730*
31-2.	Geothermal Resources Map of Akita Area, Explanatory Text, 1:500,000	1996	¥5,280*
31-3.	Geothermal Resources Map of Kyushu Area, Explanatory Text, 1:500,000	2000	¥7,040*
31-4.	Geothermal Resources Map of Sapporo Area, Explanatory Text, 1:500,000	2001	¥4,840*
31-5.	Geothermal Resources Map of Aomori Area, Explanatory Text, 1:500,000	2001	¥5,390*
32.	Magnetic Anomaly Map of East Asia, 1:4,000,000	1994	¥3,080
33.	Marine Polymetallic Mineral Deposits in the Vicinity of the Japanese Islands, Northwest Pacific, 1:7,000,000 (2nd ed.)	2017	¥3,080
34.	Thickness Distribution Map of Recent Sediments in Lake Suwa, 1:13,500	1995	¥1,650
35.	Hydro-Environmental Maps of the Muus Desert and its Surroundings, China, 1:500,000, Explanatory Text	1998	¥7,370
36.	Heat Flow Map of East and Southeast Asia, 1:5,000,000	1997	¥2,420
37.	Seafloor Acoustic Imagery Map of the Off Tokai Area, 1:400,000	1998	¥770
38.	Magmatic-hydrothermal systems and related mineralization of late Cenozoic era in the Sapporo—Iwanai district, 1:200,000	2000	¥3,960
39.	Geological Map in and Around the Forest Park, “Seiwa-Kenmin-no-Mori” in Chiba Prefecture, Boso Peninsula, Central Japan 1:15,000, Explanatory Text	2008	¥3,520
40.	Integral research and application of the subsurface geology "the central Kanto Plain" (CD-ROM)	2014	¥1,210
41.	Seamless Digital Geological Map of Tochigi Prefecture	2018	*
42.	Atlas of the post-LGM incised-valley fills beneath the Tama River Lowland	2022	*

* **Data are downloadable from the website (https://www.gsj.jp/Map/index_e.html)**

HYDROGEOLOGICAL MAPS OF JAPAN

- | | | |
|---|------|--------|
| 1. The Kiso, Yahagi and Toyo River Basins, 1:100,000, Explanatory Text | 1961 | |
| 2. Central Part of Kanto Plain, 1:100,000, Explanatory Text | 1962 | |
| 3. South-Western Part of Kanto Plain, 1:100,000, Explanatory Text | 1962 | |
| 4. Kamanashi and Fuefuki River Basins, 1:50,000, 1963 | | |
| 5. Koto, Doki and Zaita River Basins, 1:100,000, Explanatory Text | 1964 | ¥550 |
| 6. Kinsei, Kamo, Nakayama and Shigenobu River Basins, Ehime Prefecture, 1:100,000, Explanatory Text | 1964 | ¥660 |
| 7. Western Part of Chiba Prefecture, 1:100,000, 1964 | | |
| 8. Yamato River Basin, Nara Prefecture, 1:50,000 | 1965 | ¥660 |
| 9. Tama, Sagami and Sakawa River Basins, 1:100,000 | 1965 | |
| 10. North-Western Part of Kanto Plain (Especially on the foot area of Mt. Haruna), 1:100,000 | 1966 | |
| 11. Matsumoto Basin, Nagano Prefecture, 1:50,000, Explanatory Text | 1966 | |
| 12. South-Western District of Hyogo Prefecture, 1:100,000, Explanatory Text | 1967 | |
| 13. Middle Reaches of Chikugo River Basin, Saga and Fukuoka Prefectures, 1:50,000 | 1967 | ¥550 |
| 14. Hydrogeology of Mt. Fuji, 1:50,000, Explanatory Text | 1967 | ¥1,100 |
| 15. Miyakonojo Basin, 1:100,000, Explanatory Text | 1968 | ¥770 |
| 16. Coastal Region of Bay of Sendai, 1:100,000 | 1968 | ¥880 |
| 17. Kagami, Kokubu and Monobe River Basins, Kochi Prefecture, 1:25,000 | 1968 | ¥660 |
| 18. Yamakuni and Yakkan River Basins, Fukuoka and Oita Prefectures, 1:50,000 | 1969 | ¥660 |
| 19. Shirakawa and Kurokawa Basins, Kumamoto Prefecture, 1:50,000 | 1970 | ¥770 |
| 20. Hino River Basin, Tottori Prefecture, 1:50,000 | 1971 | ¥880 |
| 21. Middle Reaches of Yabe River Basin, Fukuoka Prefecture, 1:25,000 | 1971 | ¥880 |
| 22. Kamanashi River Basin, Yamanashi and Nagano Prefectures, 1:50,000 | 1973 | ¥1,210 |
| 23. Yu gawa and Agatsuma gawa Basins, Nagano and Gunma Prefectures, 1:50,000 | 1974 | ¥1,540 |
| 24. Chikuma River Basin, Nagano Prefecture, 1:50,000 | 1974 | ¥1,540 |
| 25. Shimabara Peninsula, 1:50,000 | 1975 | |
| 26. The Isahaya and Hokko District, Nagasaki Prefecture, 1:50,000 | 1978 | ¥1,430 |
| 27. The Kamigawa, Yana gawa and Miya gawa Basins, Nagano Prefecture, 1:50,000 | 1978 | ¥1,430 |
| 28. The Koriyama Basin, Fukushima Prefecture, 1:50,000 | 1978 | ¥1,540 |
| 29. The Fukushima Basin, Fukushima Prefecture, 1:50,000 | 1979 | ¥1,650 |
| 30. The Kofu Basin, Yamanashi Prefecture, 1:50,000 | 1980 | ¥1,650 |
| 31. The Chikuma gawa and Sai gawa Basins, Nagano Prefecture, 1:50,000 | 1981 | ¥1,760 |



- | | | |
|--|------|--------|
| 32. The Takada Plain, Niigata Prefecture, 1:50,000 | 1982 | ¥1,980 |
| 33. The Yoshino gawa Basin, Tokushima Prefecture, 1:50,000 | 1983 | ¥1,540 |
| 34. The Lower Nakagawa River Basin, Tokushima Prefecture, 1:50,000 | 1984 | ¥1,430 |
| 35. The Inadani Valley, Nagano Prefecture, 1:50,000 | 1984 | ¥1,980 |
| 36. The Lower Tenryugawa River Basin, Shizuoka Prefecture, 1:50,000 | 1984 | ¥1,540 |
| 37. The Lower Oigawa River Basin, Shizuoka Prefecture, 1:50,000 | 1985 | ¥1,870 |
| 38. The Lower Abekawa River Basin, Shizuoka Prefecture, 1:50,000 | 1986 | ¥1,760 |
| 39. The Tsuruga Plain, Fukui Prefecture, 1:25,000 | 1989 | ¥2,200 |
| 40. The Southern Yonezawa Basin, Yamagata Prefecture, 1:25,000 | 1993 | ¥2,420 |
| 41. Hydrogeological Map of the Amami Islands, Kagoshima Prefecture, 1:50,000 | 1998 | ¥4,840 |

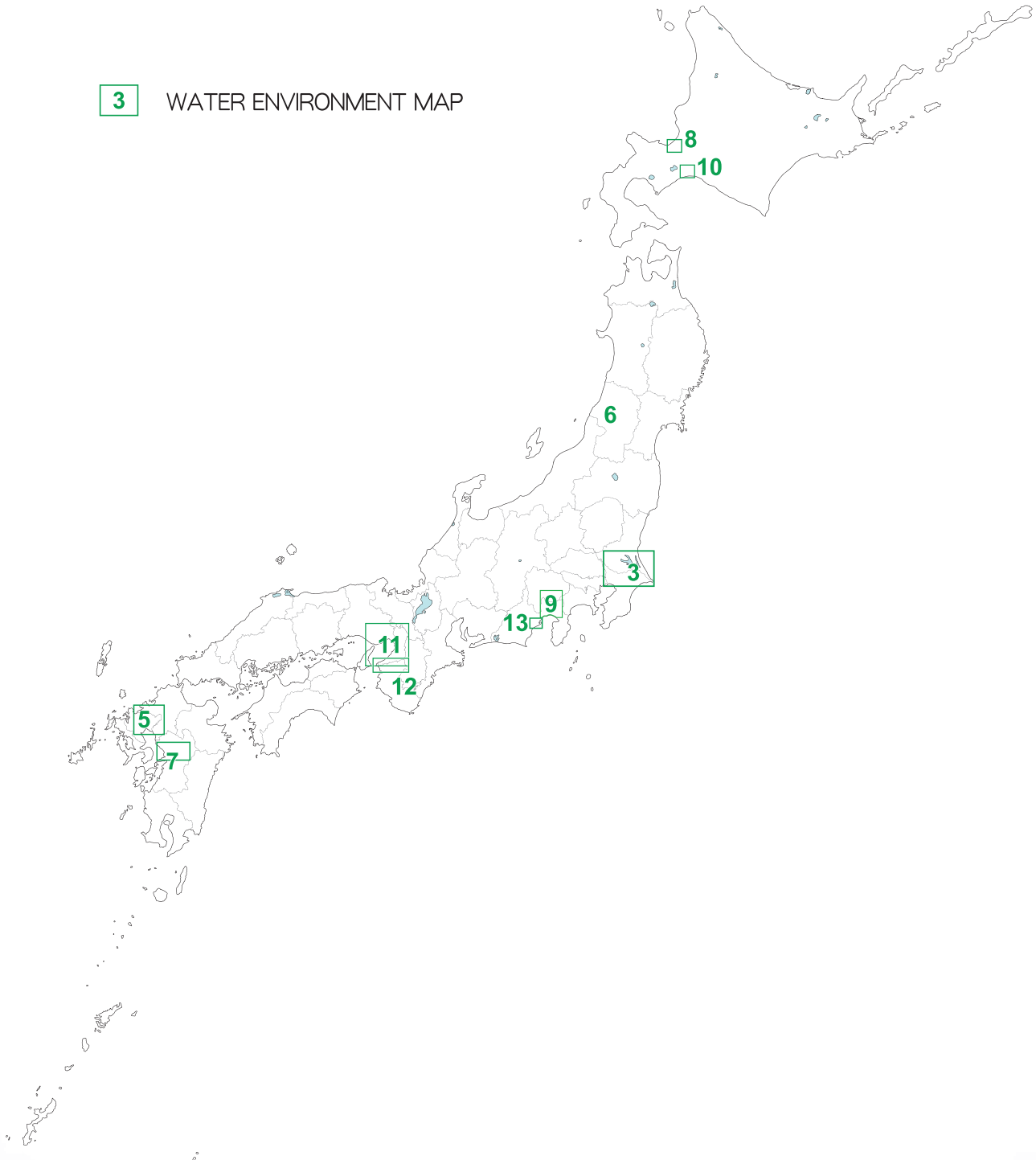
WATER ENVIRONMENT MAP

3. Kanto Plain	2005	
5. Tsukushi Plain (2nd edition)	2019	
6. Yamagata Basin (2nd edition)	2020	
7. Kumamoto Area	2014	¥1,000
8. Ishikari Plain (Sapporo)	2015	¥900
9. Mt. Fuji Area	2016	¥800
10. Yufutsu Plain	2019	
11. Osaka Plain	2019	
12. Kinokawa Plain	2021	

13. Seishin Area 2023

Water Environment Map is available on the web.
(Japanese only)
[<https://gbank.gsj.jp/WaterEnvironmentMap/main.html>]

3 WATER ENVIRONMENT MAP



GRAVITY MAP [BOUGUER ANOMALIES]

Scale 1:200,000

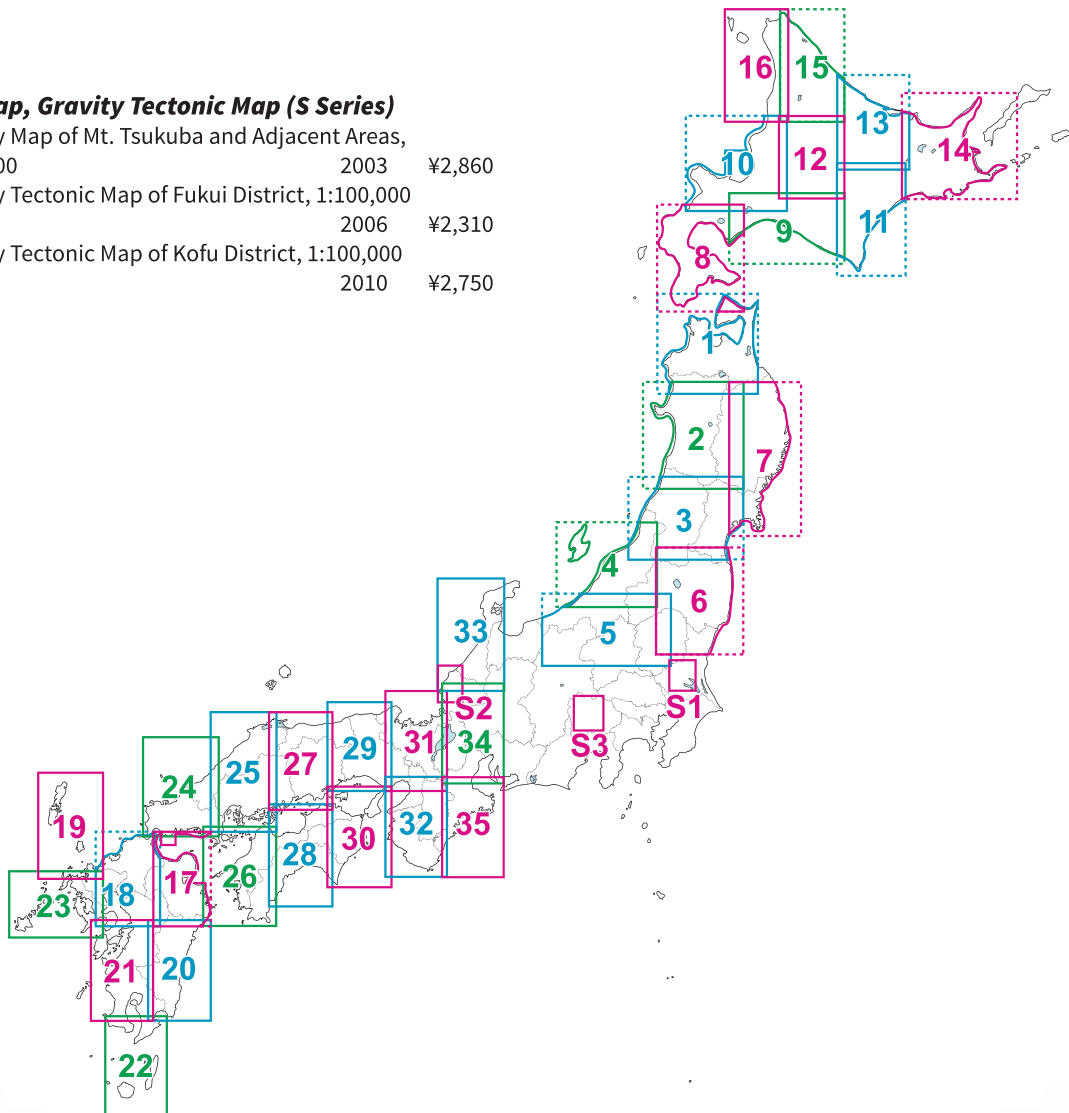
1.	Gravity Map of Aomori District	1989	¥2,310	22.	Gravity Map of Yaku Shima District	2005	¥2,530
2.	Gravity Map of Akita District	1990	¥1,540	23.	Gravity Map of Nagasaki District	2006	¥2,530
3.	Gravity Map of Yamagata District	1991	¥1,540	24.	Gravity Map of Yamaguchi District	2006	¥2,970
4.	Gravity Map of Niigata District	1993	¥1,760	25.	Gravity Map of Hiroshima District	2007	¥2,970
5.	Gravity Map of Joshin-etsu District	1994	¥2,310	26.	Gravity Map of Matsuyama District	2008	¥2,970
6.	Gravity Map of Abukuma District	1995	¥1,980	27.	Gravity Map of Okayama District	2009	¥2,750
7.	Gravity Map of Kitakami District	1996	¥2,530	28.	Gravity Map of Kochi District	2010	¥2,750
8.	Gravity Map of Oshima District	1997	¥1,870	29.	Gravity Map of Himeji District	2013	¥1,870
9.	Gravity Map of Tomakomai District	1998	¥1,650	30.	Gravity Map of Tokushima District	2013	¥1,760
10.	Gravity Map of Sapporo District	1998	¥1,650	31.	Gravity Map of Kyoto District	2014	¥1,760
11.	Gravity Map of Obihiro District	1999	¥1,650	32.	Gravity Map of Wakayama District	2017	*
12.	Gravity Map of Asahikawa District	1999	¥1,650	33.	Gravity Map of Kanazawa District	2018	*
13.	Gravity Map of Kitami District	2000	¥1,650	34.	Gravity Map of Nagoya District	2020	*
14.	Gravity Map of Nemuro District	2000	¥2,640	35.	Gravity Map of Ise District	2022	*
15.	Gravity Map of Nayoro District	2000	¥1,980				
16.	Gravity Map of Tenpoku District	2001	¥1,980				
17.	Gravity Map of Oita District	2001	¥1,870				
18.	Gravity Map of Fukuoka District	2001	¥2,530				
19.	Gravity Map of Karatsu District	2003	¥2,530				
20.	Gravity Map of Miyazaki District	2004	¥2,530				
21.	Gravity Map of Kagoshima District	2004	¥2,530				

* *Hardcopy is not available.*

Data are downloadable from the website
(https://www.gsj.jp/Map/index_e.html)

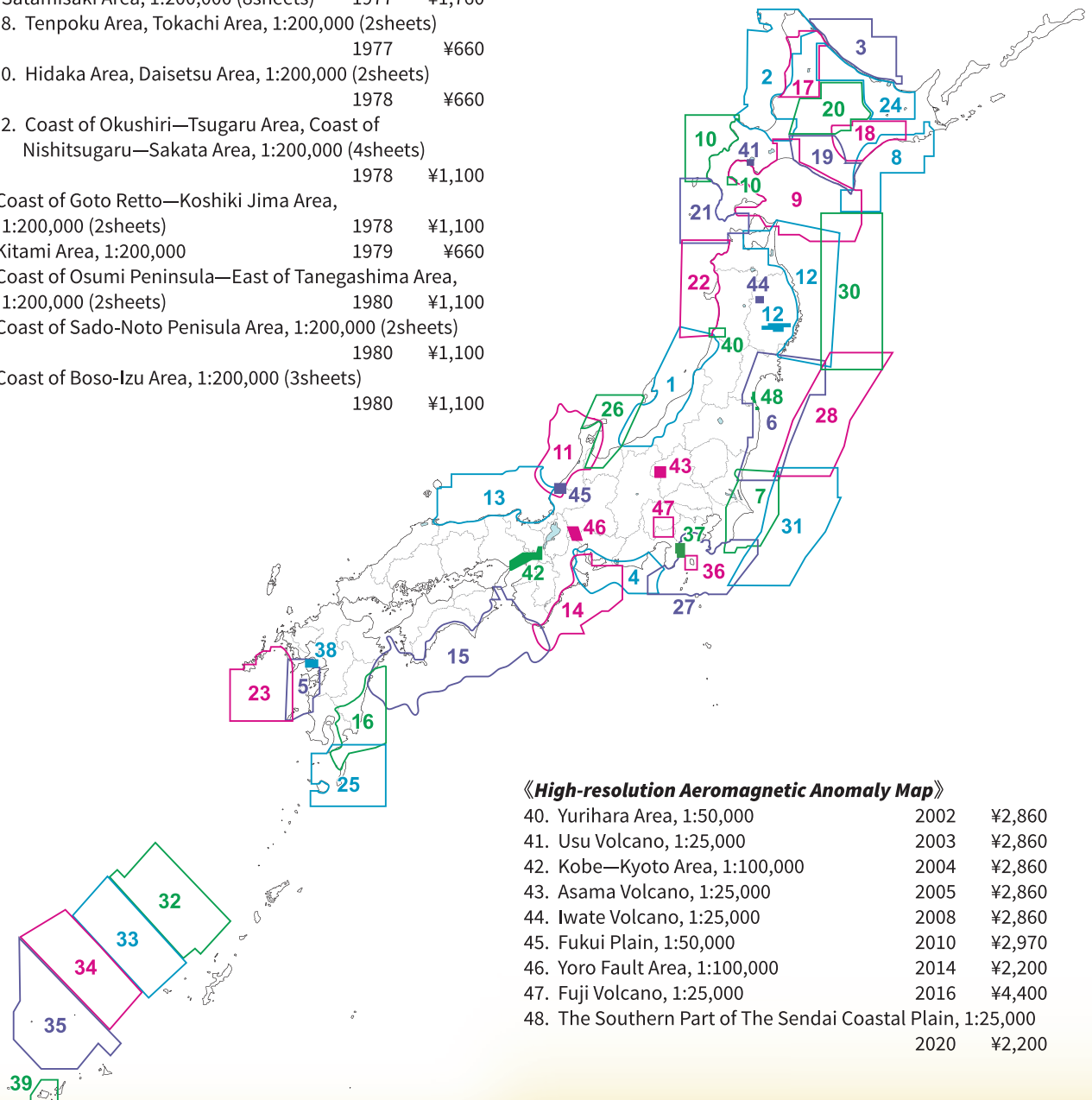
Gravity Map, Gravity Tectonic Map (S Series)

S1.	Gravity Map of Mt. Tsukuba and Adjacent Areas, 1:50,000	2003	¥2,860
S2.	Gravity Tectonic Map of Fukui District, 1:100,000	2006	¥2,310
S3.	Gravity Tectonic Map of Kofu District, 1:100,000	2010	¥2,750



TOTAL INTENSITY AEROMAGNETIC MAP

- | | | | | | |
|--|------|--------|---|------|--------|
| 1. Coast of Sakata—Itoigawa Area,
1:500,000, 1:200,000 (4sheets) | 1972 | ¥1,100 | 28. Areas off the Coast of Joban District,
1:200,000 (4sheets) | 1981 | ¥1,100 |
| 2. Coast of Wakkanai—Sapporo Area,
1:200,000 (4sheets) | 1972 | ¥1,100 | 29. Areas off the Coast of Japan, 1:1,000,000 (3sheets) | 1982 | ¥1,100 |
| 3. Coast of Hamatonbetsu—Abashiri Area,
1:200,000 (2sheets) | 1973 | ¥660 | 30. Areas off the Coast of Sanriku District,
1:200,000 (4sheets) | 1982 | ¥1,100 |
| 4. Coast of Omaezaki—Toyohashi Area,
1:200,000 (2sheets) | 1973 | ¥660 | 31. Areas off the Coast of Kanto District,
1:200,000 (4sheets) | 1982 | ¥1,100 |
| 5. Coast of Nishikyushu Nagasaki—Sendai Area,
1:200,000 | 1973 | ¥660 | 32. Northwest Offshore Areas of Okinawa Jima,
1:200,000 (2sheets) | 1982 | ¥1,100 |
| 6, 7. Coast of Kesennuma—Kamogawa Area,
1:200,000 (5sheets) | 1974 | ¥1,100 | 33. West Offshore Areas of Okinawa Jima,
1:200,000 (2sheets) | 1985 | |
| 8, 9,10. Coast of Akkeshi—Erimo Area, Coast of Hakodate
— Erimo Area, Coast of Okushiri Area,
1:200,000 (7sheets) | 1974 | ¥1,100 | 34. North Offshore Areas of Miyako Jima,
1:200,000 (2sheets) | 1989 | ¥1,100 |
| 11, 12. Coast of Wajima—Fukui Area, Coast of Shiriyazaki
— Kesennuma Area, Hanamaki Area,
1:200,000 (7sheets) | 1975 | ¥1,100 | 35. Senkaku Islands and Adjacent Areas,
1:200,000 (3sheets) | 1993 | ¥2,200 |
| 13. Coast of Fukui—Oki Area, 1:200,000 (2sheet) | 1977 | ¥660 | 36, 37. Izu-Oshima Area, Ito City and Adjacent areas,
1:50,000, 1:25,000 (2sheets) | 1994 | ¥1,100 |
| 14, 15, 16. Coast of Toyohashi—Kushimoto Area, Coast
of Kushimoto—Nobeoka Area, Coast of Nobeoka—
Satamisaki Area, 1:200,000 (8sheets) | 1977 | ¥1,760 | 38. Unzen Area. 1:200,000 | 1994 | ¥1,100 |
| 17, 18. Tenpoku Area, Tokachi Area, 1:200,000 (2sheets) | 1977 | ¥660 | 39. Iriomote Jima and Adjacent Areas, 1:100,000 | 1994 | ¥1,100 |
| 19, 20. Hidaka Area, Daisetsu Area, 1:200,000 (2sheets) | 1978 | ¥660 | | | |
| 21, 22. Coast of Okushiri—Tsugaru Area, Coast of
Nishitsugaru—Sakata Area, 1:200,000 (4sheets) | 1978 | ¥1,100 | | | |
| 23. Coast of Goto Retto—Koshiki Jima Area,
1:200,000 (2sheets) | 1978 | ¥1,100 | | | |
| 24. Kitami Area, 1:200,000 | 1979 | ¥660 | | | |
| 25. Coast of Osumi Peninsula—East of Tanegashima Area,
1:200,000 (2sheets) | 1980 | ¥1,100 | | | |
| 26. Coast of Sado-Noto Peninsula Area, 1:200,000 (2sheets) | 1980 | ¥1,100 | | | |
| 27. Coast of Boso-Izu Area, 1:200,000 (3sheets) | 1980 | ¥1,100 | | | |



GEOCHEMISTRY

Geochemical Atlas of Japan, -Northern Kanto Area-	1991	¥5,830
Geochemical Map of Japan	2004	¥4,730
Geochemical Map of Sea and Land of Japan	2010	¥2,970
Geochemical Map of Kanto Region	2015	¥1,430
Geochemical Map of the Chubu Region	2019	¥1,430

GEOCHEMICAL AND ASSESSMENT MAP

E-1. Regional geochemistry of soil and sediment of Anesaki (1:50,000)	2003	¥990
E-2. Geochemistry of rocks, sediments and soil of Sendai area (1:50,000)	2006	¥1,100
E-3. Geochemical and risk assessment map of subsurface soils of Miyagi Prefecture	2008	¥1,100
E-4. Geochemical and risk assessment map of subsurface soils of Tottori Prefecture	2008	¥1,100
E-5. Geochemical and risk assessment map of subsurface soils of Toyama Prefecture	2012	
E-6. Geochemical and risk assessment map of subsurface soils of Ibaraki Prefecture	2014	¥990
E-7. Geochemical and risk assessment map of subsurface soils of Kochi Prefecture	2017	*
E-8. Geochemical and risk assessment map of subsurface soils of Shikoku Region	2021	*
E-9. Geochemical and risk assessment map of subsurface soils of Kyushu Region	2023	*

* Data are downloadable from the website (https://www.gsj.jp/Map/index_e.html)

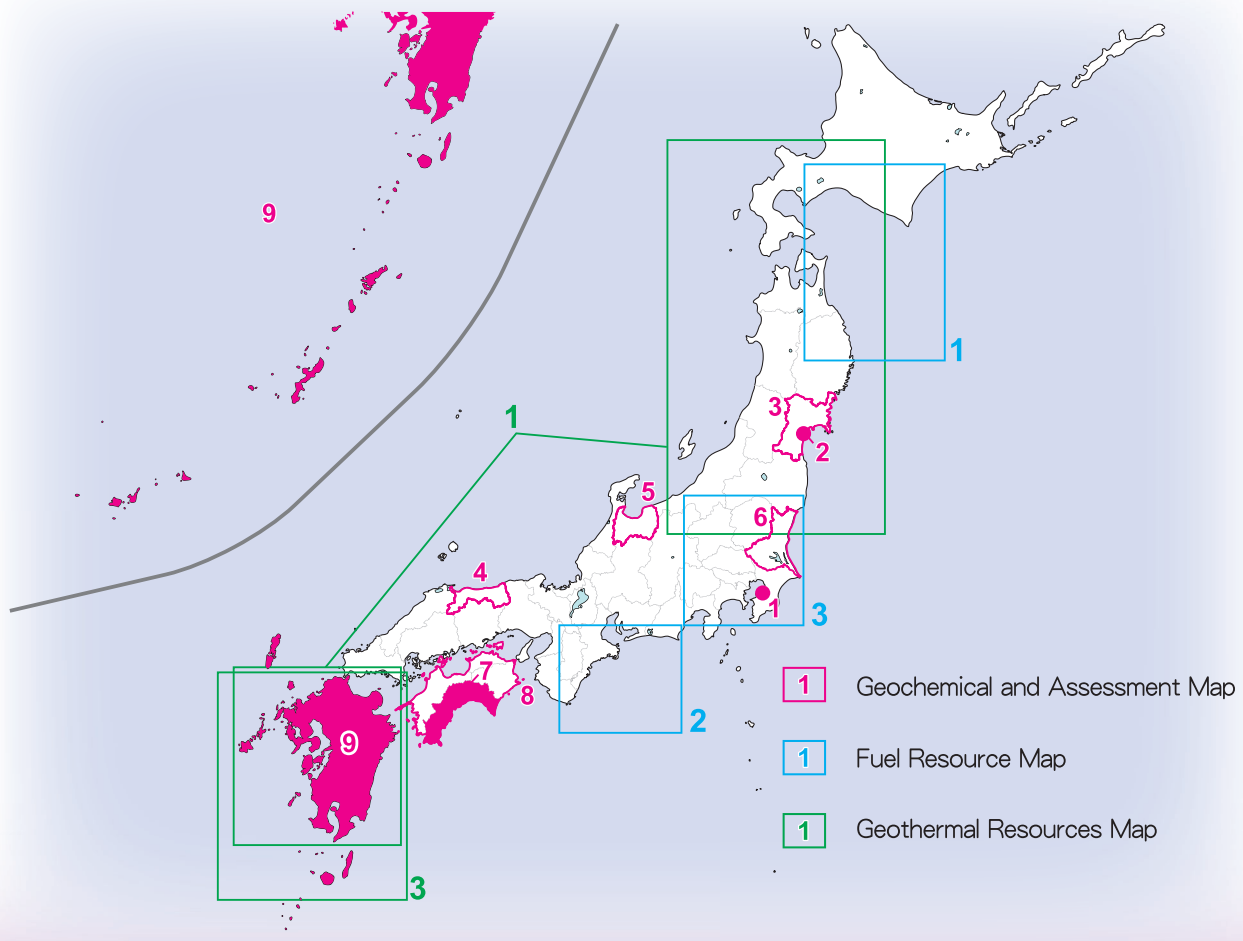
FUEL RESOURCE MAP

FR-1. Fuel Resource Geology Map "Off Sanriku"	2005	¥1,100
FR-2. Fuel Resource Geology Map "Eastern Nankai Trough"	2010	¥1,430
FR-3. Fuel Resource Map "Kanto Region"	2015	¥990

GEOHERMAL RESOURCES MAP

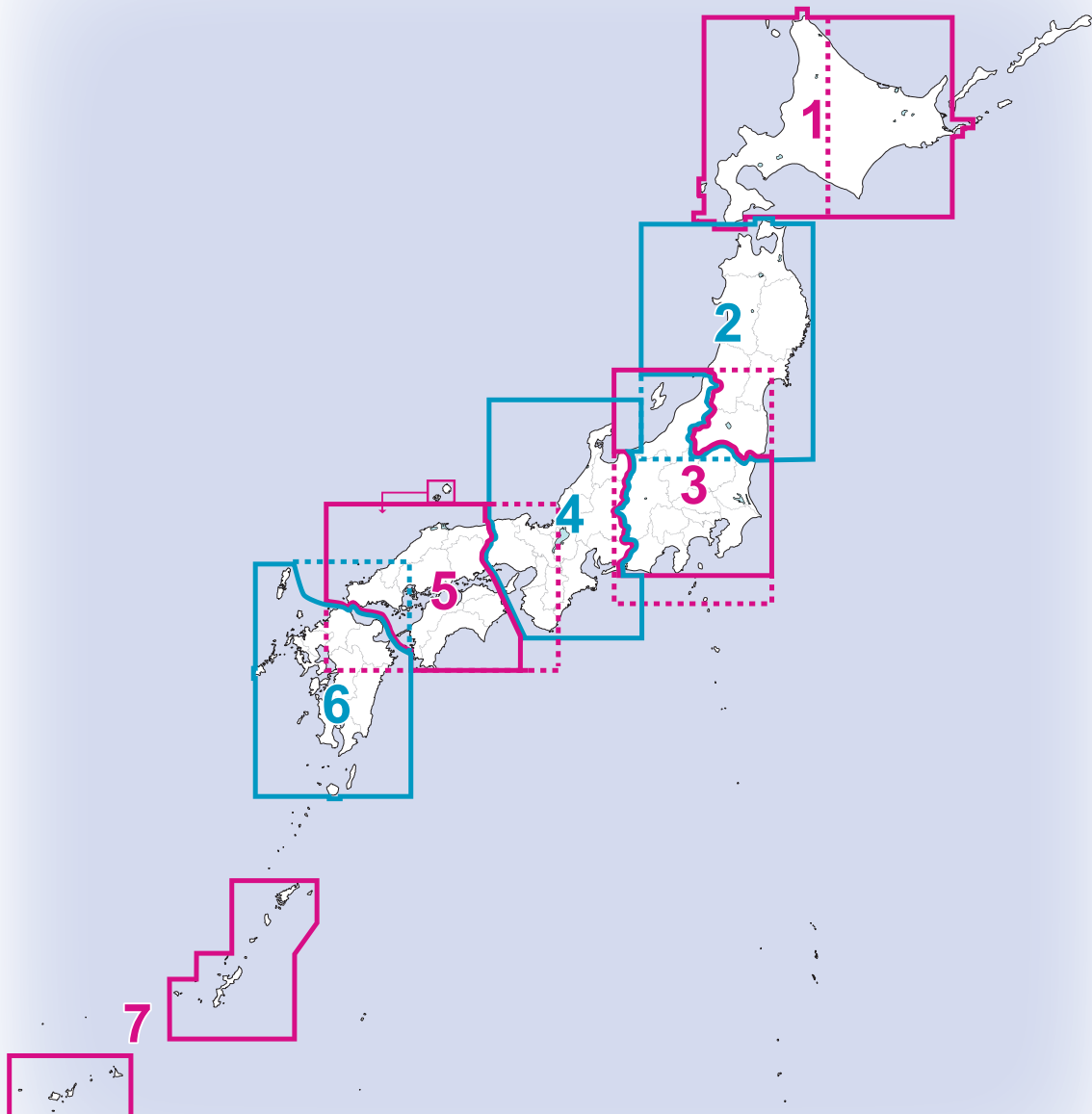
GT-1. Geothermal Resources Map of Tohoku and Kyushu (CD-ROM Version)	2002	*
GT-2. Distribution Map and Catalogue of Hot and Mineral Springs in Japan (Second Edition) (CD-ROM Version)	2005	*
GT-3. Geothermal Data Processing Collections for the Hohi, Oita and Kyushu Areas, Japan	2007	*
GT-4. Geothermal Potential Map in Japan	2009	*

* Data are downloadable from the website (https://www.gsj.jp/Map/index_e.html)



MINERAL RESOURCES MAP 1:500000

1. Mineral Resources Map of Hokkaido [Eastern part and Western part] (Total 2sheets)	1996	¥7,480
2. Mineral Resources Map of Tohoku	1997	¥4,510
3. Mineral Resources Map of Kanto—Koshin-etsu	1998	¥4,730
4. Mineral Resources Map of Chubu, Kinki	2000	¥4,730
5. Mineral Resources Map of Chugoku Shikoku	2004	¥4,950
6. Mineral Resources Map of Kyushu	2003	¥4,840
7. Mineral Resources Map of Nansei Shoto	2005	¥3,630



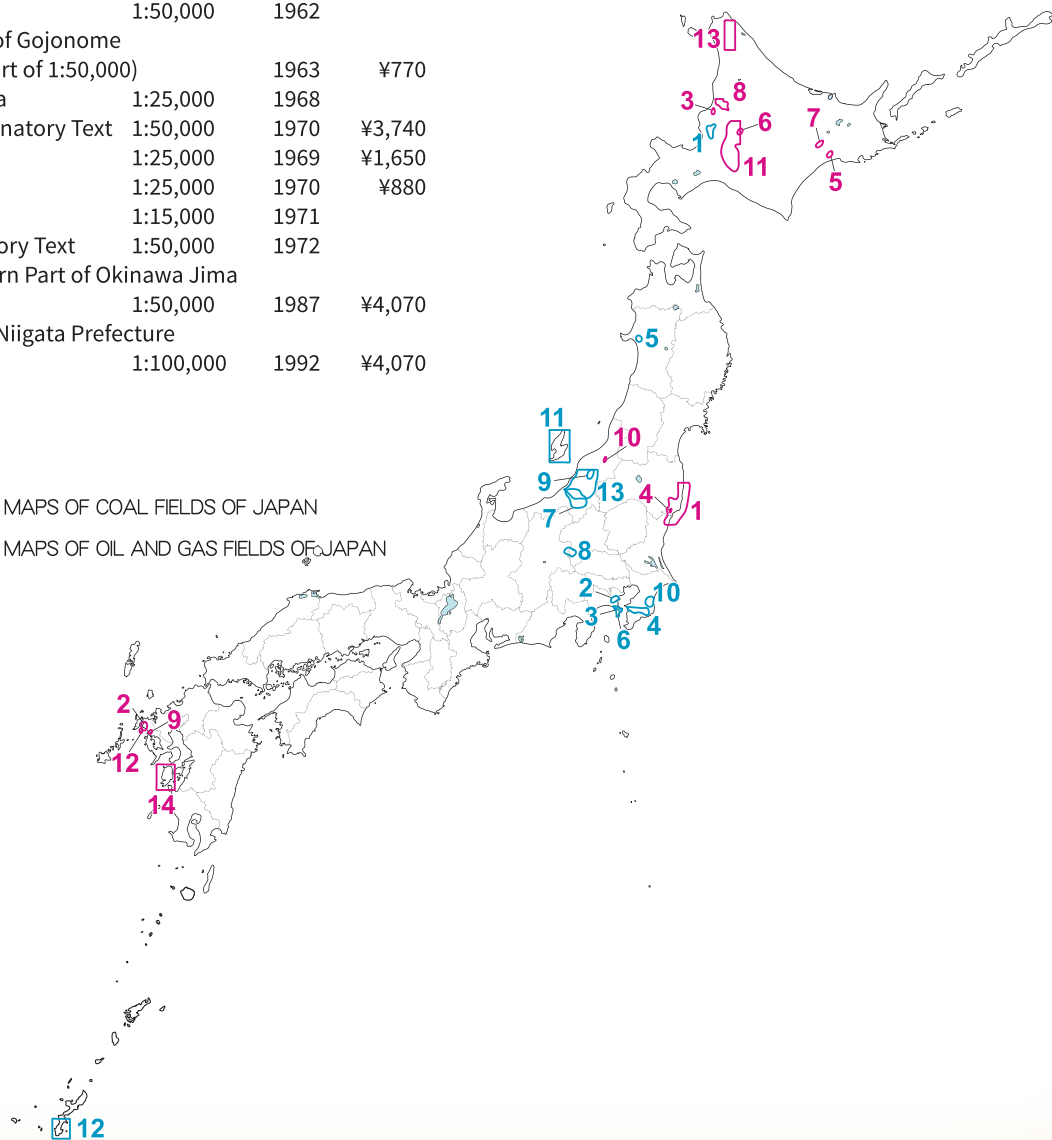
GEOLOGICAL MAPS OF COAL FIELDS OF JAPAN [WITH EXPLANATORY TEXT]

1. Geological Map of the Joban Coal Field	1:50,000	1957	
2. Geological Map of the Hokusho Coal Field	1:25,000, 1:10,000	1960	¥3,190
3. Geological Map of the Owada District, Rumoi Coal Field	1:25,000, 1:10,000	1959	¥770
4. Geological Map of the Izumi District, Joban Coal Field	1:10,000, 1:50,000	1959	¥660
5. Geological Map of the Shin-Nuibetsu District, Kushiro Coal Field, Hokkaido	1:10,000	1961	¥770
6. Geological Map of the Higashi-Ashibetsu Area, Sorachi District, Ishikari Coal Field	1:10,000	1961	¥1,430
7. Geological Map of the The Northwestern District, Kushiro Coal Field, Hokkaido	1:20,000	1967	¥1,430
8. Geological Map of the Uryu—Rumoi Coal Field	1:20,000	1968	¥3,190
9. Geological Map of the Southwestern Area of Sasebo City, in the Sasebo Coal Field	1:10,000	1969	¥1,430
10. Geological Map of the Akatani Coal-Mine, Niigata Prefecture	1:5,000	1969	¥1,320
11. Geological Map of the Ishikari Coal Field, Supplementary Note	1:50,000	1973	
12. Geological Map of the South-Western Area in the Sasebo Coal Field	1:50,000	1974	¥1,980
13. Geological Map of the Tenpoku Coal Field	1:25,000	1975	
14. Geological Map of the Amakusa Coal Field	1:50,000	1997	¥7,480

GEOLOGICAL MAPS OF OIL AND GAS FIELDS OF JAPAN

1. Aoyamaoku	1:50,000	1961	¥660
2. Yokohama	1:15,000	1961	
3. Yokosuka	1:20,000	1962	
4. Futtsu—Otaki	1:50,000	1962	
5. Southern Part of Gojonomie	1:15,000 (a part of 1:50,000)	1963	¥770
6. Miura Peninsula	1:25,000	1968	
7. Uonuma, Explanatory Text	1:50,000	1970	¥3,740
8. Motojuku	1:25,000	1969	¥1,650
9. Nanatani	1:25,000	1970	¥880
10. Mobara	1:15,000	1971	
11. Sado, Explanatory Text	1:50,000	1972	
12. Central-Southern Part of Okinawa Jima	1:50,000	1987	¥4,070
13. Central Part of Niigata Prefecture	1:100,000	1992	¥4,070

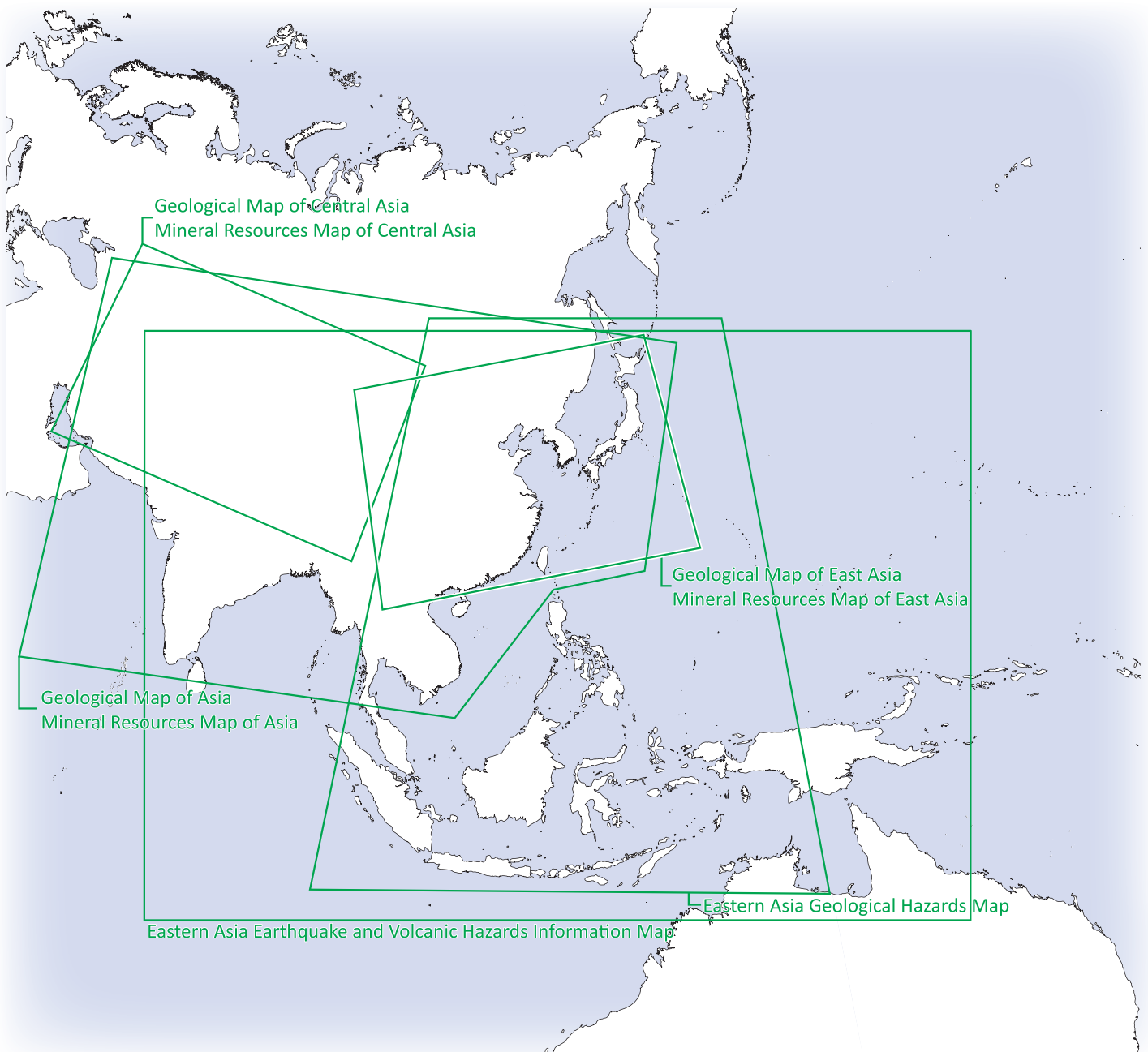
- 11** GEOLOGICAL MAPS OF COAL FIELDS OF JAPAN
11 GEOLOGICAL MAPS OF OIL AND GAS FIELDS OF JAPAN



ASIA AREA GEOSCIENCE

Geological Map of Asia, 1:5,000,000	2011	¥4,620
Mineral Resources Map of Asia, 1:5,000,000, Explanatory Note	2014	¥3,960
Geological Map of East Asia, 1:3,000,000	2003	¥8,360
Mineral Resources Map of East Asia, 1:3,000,000, Explanatory Note	2007	¥2,530
Geological Map of Central Asia, 1:3,000,000	2007	¥7,150
Mineral Resources Map of Central Asia, 1:3,000,000, Explanatory Note	2012	¥4,950
Geoscientific Maps of Southern Part of Korea, Western Part of Japan and Their Adjoining Seas, 1:4,000,000	2001	¥1,430
Eastern Asia Geological Hazards Map, 1:7,700,000, Explanatory Note	2002	¥3,850
Eastern Asia Earthquake and Volcanic Hazards Information Map, 1:10,000,000	2016	*

* *Hardcopy is not available. Data are downloadable from the website (https://www.gsj.jp/Map/index_e.html)*



DIGITAL GEOSCIENCE MAP (DGM)

Digital Geological Maps of JAPAN 1:200,000

G20-1. North Hokkaido, 2nd Edition	2010	¥990
G20-2. South Hokkaido, 2nd Edition	2010	¥990
G20-3. Tohoku	2004	¥3,190
G20-4. Kanto—Koshin-etsu and Izu—Ogasawara Islands	2004	¥2,970
G20-5. Hokuriku, Chubu and Kinki	2005	¥1,540
G20-6. Eastern and central parts of Chugoku and Shikoku	2005	¥1,540
G20-7. Western part of Chugoku, Kyushu and Nansei Shoto	2005	¥1,540

Geology (Missing number : G-3, G-12)

G- 1. Geological Map of Japan 1:1,000,000 3rd Edition, 2nd CD-ROM Version	2003	¥1,100
G- 2. Digital Geologic Map of East and Southeast Asia, 1:2,000,000 Second Edition	2004	
G- 4. Distribution and Occurrence of Cenozoic Volcanic Rocks in Japan Ver.1.0	2000	
G- 5. Urban Geoscientific Data of East and Southeast Asia - GIS data sets of 11 cities -	2001	
G- 6. Index Database to the Geological Maps of Japan (CD-ROM Version)	2001	
G- 7. Geological Guide of Hokkaido Second Edition	2002	¥1,100
G- 8. Urban Geoscientific Data of East and Southeast Asia - GIS data sets of 11 cities - 2nd Edition	2001	
G- 9. Geological Map of Fuji Volcano (CD-ROM Version)	2002	¥1,210
G-10. Geological Map of Japan 1:2,000,000 5th Edition, CD-ROM Version	2003	¥1,320
G-11. Interactive Geological Hazard Map of East and Southeast Asia Version2	2006	
G-13. Interactive Geological Hazard Map of East and Southeast Asia with GeoHazard View	2004	
G-14. Surface Geology of Sapporo and its Surroundings, Hokkaido, (CD-ROM Version), 1:30,000	2006	*
<i>*Data are downloadable from the website (https://www.gsj.jp/Map/index_e.html)</i>		
G-15. Geo-environmental Atlas around Yamagata City (CD-ROM Version)	2009	¥1,100
G-16. Seamless Geological Map of Japan at a scale of 1: 200,000 DVD edition	2009	¥1,650
G-17. Geological Guide of Kyushu	2010	¥1,100

Marine Geology

M-1. Database of the Marine Seismic Profiles around Japan (CD-ROM Version)	2001	
--	------	--

Volcano

V-1. Geological database for Iwate Volcano	2006	
V-2. Geological database for Miyakejima Volcano	2006	
V-3. Geological database for Kuchinoerabujima Volcano	2009	¥1,210

Earthquake

EQ-1. Tsunami inundation maps for the Pacific Coast of Hokkaido	2004	¥1,210
---	------	--------

Geophysics

P- 2. Gravity Database of Japan, DVD Edition	2013	*
P- 3. Magnetic Anomaly Map of East and Southeast Asia Revised Version (3rd Edition)	2021	*
<i>*Data are downloadable from the website (https://www.gsj.jp/Map/index_e.html)</i>		
P- 4. Geoscientific Maps of Southern Part of Korea, Western Part of Japan and Their Adjoining Seas 1:4,000,000 (CD-ROM Version)	2002	
P- 5. Geothermal Gradient and Heat Flow Data in and around Japan	2004	¥1,210
P- 6. Aeromagnetic Database of Japan	2005	¥1,760
P- 7. Integrated Geophysical Maps of Usu Volcano	2010	¥1,210

PURCHASE GUIDE

Regarding the GSI publications purchase, please contact the society or the company listed below.

Tokyo Geographical Society

12-2 Nibancho, Chiyoda-ku, Tokyo, 102-0084 Japan

Fax: +81-3-3263-0257

Email: chigaku@geog.or.jp

URL: <http://www.geog.or.jp/english.html>

Kansai Map Center

Yoshida Honmachi 27-8, Sakyo-ku, Kyoto City, 606-8317, Japan

Fax: +81-75-761-0120

Email: kanchizu@arion.ocn.ne.jp

Japan Map Center

Aobadai 4-9-6, Meguro-ku, Tokyo, 153-8522, Japan

Fax: +81-3-3465-7591

Email: maps@jmc.or.jp

Yamanote Museum

Yamanote 7 Jō 8-6-1, Nishi-ku, Sapporo City, 063-0007, Japan

Fax: +81-11-623-1101

Email: info@yamanote-museum.com

National Institute of Advanced Industrial Science and Technology (AIST)

Geological Survey of Japan

AIST Tsukuba Central 7, 1-1-1 Higashi, Tsukuba, Ibaraki 305-8567 Japan

<https://www.gsj.jp/en/>